



**An American Manufacturer of
Promotional Products - Souvenirs - Banks - Gifts
Awards - Plaques - Flag Pole Ornaments**



ASI 47964
PPAI 269371
UPIC AMMetal
SAGE 67793

Contents

Custom Products	3-5
Promotional Products	6-8
Awards & Figures	9-23
Eagles	10-12
Professional	13-15
Sports	16-18
Miscellaneous	19-23
Souvenirs	24 - 33
New York Souvenirs.....	25-26
Washington, DC Souvenirs.....	27
Historic Buildings & Monuments	28
Historic & Patriotic	29
Historic Figures Busts & Banks.....	30-31
School Mascots Souvenirs.....	32
Miscellaneous Souvenirs	33
Banks	34-47
Antique & Classic Car Banks	35-38
Truck, Tractor, Construction Vehicles & Other Transportation Banks.....	39-43
Train Banks	44
Building Replicas Banks	45
Animal Banks	46
Miscellaneous Banks	47
Gifts	48-64
Desk Accessories	49-59
Bookends	60-62
Paperweights	63
Mortars & Pestles.....	64
Plaques	65-70
Flag Pole Ornaments	71-72
Finishes, Bases, Tooling & Proofing	73
General Information	74

Custom Products

Awards – Replicas – Miniatures – Commemoratives – Recognition Gifts

- Made in the USA
- Molded metal (stand alone or mounted on bases made of other materials)
 - We can help design your custom piece or work from your design
 - Stock items can be modified to suit your custom needs
- Firm quotes
- Pre-production proofs

We specialize in producing custom designed metal products. All design work and production is done at our factory here in the United States. For custom designs, our designers work from photos, drawings, your idea, a description of what you want, or we can work from your existing design. A basic art layout is prepared for your review. After you and our staff agree on a final design and product specifications, we prepare a final art proof if needed and quote your project. If you decide to go ahead with the project, we will then produce a pre-production proof model for your approval prior to final production.

Your piece can be provided with a felt bottom or mounted on wood, marble, high quality plastic or other special material bases. Various methods of imprinting are available, including molding in the metal, pad printing, attaching etched or silk-screened plates or attaching any of a wide variety of custom or stock medallions.

Design and tooling charges can range from hundreds of dollars to thousands. Production time for custom pieces can take anywhere from one to three months.

The examples below and on the following pages are just a few of the many custom pieces we have created.

Thurgood Marshall
College Fund
Award
8" W x 12 1/2" H



Johnson & Johnson
Everpoint Needles
3 1/2" H x 2 1/2" W



Seattle Space Needle
50th Anniversary Ashtray
4 1/2" W x 3 1/2" H



The Reggie Award
5" W x 10 1/4" H



Custom Products

All custom products are made in the USA.

Colts Community
Quarterback
Award
5"W x 9½"H



CFC Award
5"W x 6¾"H



Financial
Solutions
Award
5"W x
9¾" H



RITA
Romance
Writers of
America
Award
5"W x 12"H



New Jersey
Builders
Association
Sam Award
6"W x 12"H



Sony Award
4"W x 7"H



Budweiser
Award
5½" W x 16"H



The International
Andy Awards
8"W x 9"H



The International
Andy Awards
6¾"W x 7"H



Custom Products

All custom products are made in the USA.



P9502
The National
Bank and Trust Co.
South Bend, IN
2½"W x 4½"L x 4½"H



**National Shrine
Of St. Gerard**
9"W x 6½"H



P9350
Fort Vancouver
Vancouver, WA
2½"W x 4"L x 4½"H



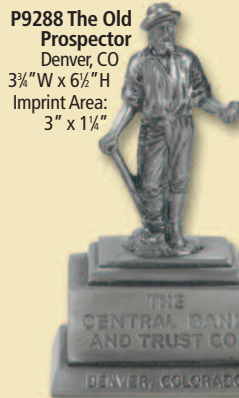
P9076
The American National
Bank and Trust Co.
Kalamazoo, MI
2¼"W x 3½"L x 5¼"H



P9510
Gold Dome Building
Buffalo, NY
3¾"W x 4¼"L
x 4½"H



P9566 McPherson Opera House
McPherson, KS 100 Year Anniversary
3"W x 6½"L x 3¼"H



**P9288 The Old
Prospector**
Denver, CO
3¾"W x 6½"H
Imprint Area:
3" x 1¼"



**P9298 State of
Washington Bank**
3½"H x 5" W



P9294 Idaho Potato
4"H x 4¼"L



6837
Scorpion Award Figure
3¾"W x 4¼"H



6836
United Way
Key Tag
3¾"L x 1¼"W



6830 Anvil
2¼"H x 5¼"W
(Shown with
Defense Logistics
Logo)



6818
Rutgers University Paperweight
2¼"W x 3¼"H



**6819 Univerity
of Minnesota
Paperweight**
4½"W x 2¼"H



6820 Penn State University Plaque
6½"W x 2¼"H

Promotional Products

Most items featured in our catalog can be printed with a logo and/or copy so they can be used as a promotional product

- Made in the USA
- Molded metal (stand alone or mounted on bases made of other materials)
 - We can imprint most of our stock pieces or mount them on a base that can be printed
 - Stock items can be modified to suit your custom needs
 - Fully custom designed products available
 - Firm quotes
- Pre-production proofs

Most of the products featured in our catalog and/or on our website can be directly imprinted with a logo and/or copy or we can mount them on a base that can be printed.

We also offer completely custom designed metal promotional items. Our expertise can provide a unique solution to your promotional product need.

All design work and production is done at our factory here in the United States. For custom designs, our designers work from photos, drawings, your idea, a description of what you want, or we can work from your existing design. A basic art layout is prepared for your review. After you and our staff agree on a final design and product specifications, we prepare a final art proof if needed and quote your project. If you decide to go ahead with the project, we will then produce a pre-production proof model for your approval prior to final production.

Your piece can be provided with a felt bottom or mounted on wood, marble, high quality plastic or other special material bases. Various methods of imprinting are available, including molding in the metal, pad printing directly on the piece or the base, attaching etched or silk-screened plates or attaching any of a wide variety of custom or stock medallions.

Design and tooling charges can range from hundreds of dollars to thousands. Production time for custom pieces can take anywhere from one to three months.

The examples below and on the following pages are just a few of the many stock and custom promotional product pieces we have created.

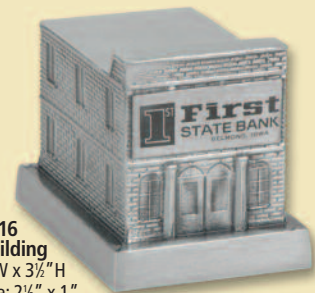


6822 Bookend
4"W x 4"H
(Shown with Defense Logistics Agency Logo)

9269 Triangle Logo Paper Weight
4"W x 4"H
(Other Disks Available)



P9544 Box Car
6¼"L x 2½"W x 3"H
Imprint Area: 1¼" x 1¼"



P9516 General Building
4½"L x 3¼"W x 3½"H
Imprint Area: 2½" x 1"
or 3" x 2½"

Promotional Products

All promotional products are made in the USA.



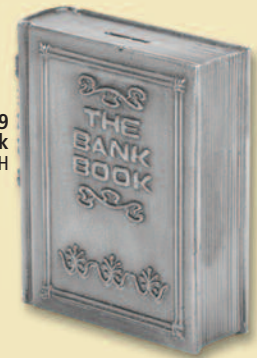
9045 Bull & Bear
3½" H x 5¼" L Base: ½"
(#9045-M with Base)



BCH Business Card Holder
2¼" W x 4½" L x 2¼" H
Imprint Area: 1¾" x 1½"



MPH Memo Pad Holder
4" W x 4¾" L x 1" H
Imprint Area: 3" x 1"



7759 Bank Book
5½" H



C428 \$5000 Gold Bar
3¾" L x 1" W



C387 Chalice
5½" H
Imprint Area:
1½" x 1½"



P1157 Armored Car
6" L x 2¾" W x 3½" H
Imprint Area: 3½" x 2"



7657 Super Star Paperweight
3¾" L x 3¾" W



6603 Military Letter Opener
½" W x 7" L
(Other Disks Available)



G100 Ball Marker Hat Clip
¾" W x 1¾" L



9128 Pharmaceutical Paperweight
3" W x 4¾" H
Imprint Area: 2" x 1"



P1036 Blubber Boy Piggy Bank
5" L x 3" W x 3¾" H



G101 Divot Tool & Ball Marker
1½" W x 2¼" L



G103 Large Bottle Opener
7" L x ¾" H (With Key Chain)



G102 Small Bottle Opener
4" L x ¾" H (With Key Chain)

Promotional Products

Most items featured in our catalog can be printed with a logo and/or copy so they can be used as a promotional product.

W1001 Custom Golf Bag Tags

2" H x 3" W. Cast solid metal with your choice of finishes and colors. Individual personalization available!



W1001
Brass

W1001
Pewter

Golf Towel Caddy
Includes one 1" removable magnetic ballmarker. Antique brass or antique pewter finish standard.



W1002
Pewter



W1002
Brass

W1003 Diestruck Keytags

Available in 1 1/4" or 1 1/2" size. One or two sided standard relief imprint. Made of solid brass with a hand satin antique brass, nickel, gold or silver finish.



W1003

W1003

W1004 Money Clips

1" or 1 1/4" round die struck emblem on a solid metal money clip with a spring back.



W1004

Made of solid brass with a hand satin antique brass, nickel, gold or silver finish.

W1004

Golf Divot Repair Tools with Magnetic Removable Ballmarkers

W1006

Options available for 1" ball marker - die struck, cast, full color digital imprint with epoxy dome or silk screened imprint with epoxy dome.

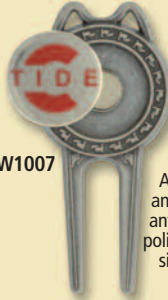


W1007

Comes with a spring loaded money clip/pocket clip.



W1007



W1008

Available in antique brass, antique nickel, polished gold or silver finish.



W1005
Silk Screened

W1005
Full Color



W1005
Die Struck

Golf Hat Clips
Golf hat clip available in brass, silver, antique nickel, or gold finish with strong magnet to hold die struck ball marker in place.



W1009 Custom Cast Wine Charms

Up to 1" longest dimension (not including hoop). Available in gold-tone, silver-tone antique brass or antique nickel finish.



All charms include 2 colored beads in eight stock colors.

Cast in pewter and available in hand and satin antique pewter, gold tone, silver tone or antique brass finish on charms.

W1010 Solid Metal Coasters

Solid metal coaster with 1 1/4" pewter die struck emblem or silk screened imprint on a matte black finish and felt bottom.



Genuine walnut holders hold 4 solid metal coasters

W1011 Custom Push Pins

Photo Mag - 7/16" Cast - Up to 1" Easy Grip Push Pin - 7/16" Imprint Area. Antique pewter, antique brass, gold-tone or silver-tone finish.



W1012 Snow Flake Ornament

3 1/2" - Imprint area 1" or 1 1/4" Die Struck, 1 color Silk Screened, or Full Color. Available in antique pewter or antique brass finish.

Choose ribbon or suction cup attachment.



W1012

W1013 Custom Cast Groundbreaking Commemorative Shovels

6 1/4" Choice of satin antique pewter or satin antique brass finish.



Awards & Figures

- **Made in the USA**
- **Molded metal (stand alone or mounted on bases made of other materials)**
- **We can imprint most of our stock pieces or mount them on a base that can be printed**
 - **Stock items can be modified to suit your custom needs**
 - **Fully custom designed products available**
 - **Firm quotes**
- **Pre-production proofs**

We sell our stock awards and figures mounted on bases or plaques with or without personalization or we also sell them as components for you to assemble.

We also produce custom designed awards and figures. All design work and production is done at our factory here in the United States. For custom designs, our designers work from photos, drawings, your idea, a description of what you want, or we can work from your existing design. A basic art layout is prepared for your review. After you and our staff agree on a final design and product specifications, we prepare a final art proof if needed and quote your project. If you decide to go ahead with the project, we will then produce a pre-production proof model for your approval prior to final production.

Your piece can be provided with or without a felt bottom where applicable, or mounted on wood, marble, high quality plastic or other special material bases. Various methods of imprinting are available, including molding in the metal, pad printing, attaching etched or silk-screened plates or attaching any of a wide variety of custom or stock medallions.

For custom designs, design and tooling charges can range from hundreds of dollars to thousands. Production time for custom pieces can take anywhere from one to three months.

The following pages contain photos of most of our stock awards and figures. Visit our website to see all of them.



6821 Eagle
4" W x 7" H



P1203 Eagle
3 3/4" W x 6 1/2" H Base: 4" H
(#P1203-M with Base)



6813
Wind Turbine Award
7 1/2" W x 12 1/4" H
Base: 2 3/4" H
(#6813-P with Base)

Awards & Figures - Eagles

All figures are made in the USA and available in polished brass, polished nickel, satin nickel, satin flemish, pewter and more. Ask about our custom engraving.



AC9421 Eagle
7" W x 12" H Base: 4 1/4"
(#AC9421-W with Base)



AC9475 Eagle on Globe
11 1/2" W x 14 1/2" H Base: 4 1/4"
(#AC9475-W with Base)

7804 Eagle
4 3/4" W x 5 3/4" H Base: 2 3/4"
(#7804-P with Base)



AC9407 Eagle
7 1/2" W x 11" H
Base: 2 1/4"
(#AC9407-P with Base)



AC4427 Eagle
7 1/2" W x 11" H Base: 4 1/4"
(#AC4427-W with Base)



7807 Eagle
7 1/4" W x 7 3/4" H Base: 2 3/4"
(#7807-P with Base)



7800 Eagle
7" W x 6 1/4" H Base: 2 3/4"
(#7800-P with Base)



7875 Eagle
5 1/4" W x 7 1/2" H Base: 2 3/4"
(#7875-P with Base)



7876-P Eagle
6 1/2" W x 7" H Base: 2 3/4"
(#7876-P with Base)



9303 Eagle
5 1/4" W x 6 1/2" H
Base: 2 3/4"
(#9303-P with Base)



7768 Eagle
5" W x 8 1/2" H
Base: 2 3/4"
(#7768-P with Base)



8802 Eagle
5 3/4" W x 8 1/2" H
Base: 2 3/4"
(#8802-P with Base)

Awards & Figures - Eagles & Birds

All figures are made in the USA and available in polished brass, polished nickel, satin nickel, satin flemish, pewter and more. Ask about our custom engraving.



8801 Eagle
9½"W x 11¼"H
Base: 5"
(#8801-W
with Base)



C421 Eagle
1½"W x 3"H
Base: 2½"
(#C421-P with Base)

9095 Eagle
2½"W x 4"H
Base: 2"
(#9095-P with Base)



C226 Eagle
2¾"W x 4¼"H
Base: 2½"
(#C226-P with Base)



7528 Eagle
5½"W x 6½"H
Base: 2"
(#7528-M
with Base)



8803 Eagle Head
5½"W x 4¾"H
Base: 2¼"
(#8803-W with Base)



7770 Eagle With Arrows
6"W x 5"H
Base: 2¾"
(#7770-P
with Base)



7780 Eagle
5½"W x 6½"H
Base: 2¾"
(#7780-W
with Base)



9304 Eagle Head
4"W x 4¾"H
Base: 2¼"
(#9304-W with Base)



7781 Eagle
11"W x 5½"H
Base: 2¾"
(#7781-P
with Base)



7805B Eagle
6"W x 5"H
Base: 2¼"
(#7805B-W
with Base)



9303 Eagle
5½"W x 6½"H
Base: 2¾"
(#9303-P with Base)

Awards & Figures - Eagles

All figures are made in the USA and available in polished brass, polished nickel, satin nickel, satin flemish, pewter and more. Ask about our custom engraving.



8801D
Eagle With Disk
9½" W x 11¼" H
Disk: 2" Dia



US Air Force
2" Dia



US Air Force
2" Dia



US Army
2" Dia



Boy Scouts
2" Dia



US Coast Guard
2" Dia



Vol. Firefighter
2" Dia



Homeland Security
2" Dia



Seal of the U.S.
2" Dia



US Marine Corps
2" Dia



US Navy
2" Dia



8802D
Eagle With Disk
5¼" W x 8½" H
Disk: 5/8" Dia



US Air Force
5/8" Dia



US Air Force
5/8" Dia



US Coast Guard
5/8" Dia



Vol. Firefighter
5/8" Dia



US Marine Corps
5/8" Dia



Seal of the U.S.
5/8" Dia



US Navy
5/8" Dia

Awards & Figures - Professional

All figures are made in the USA and available in polished brass, polished nickel, satin nickel, satin flemish, pewter and more. Ask about our custom engraving.



9020
Lady of Justice
6" H Base: 2 1/8"
(#9020-P with Base)



1000
Lady of Justice
10" H



6824
Orator
2 1/2" W x 5 1/2" H
Base: 2 1/4"
(#6824-P with Base)



211
Sentry
5 1/4" H Base: 2"
(#211-P with Base)



9006
Salesman
10" H Base: 2 1/4"
(9006-P with Base)



7746
Salesman
11 1/4" H Base: 3 1/4"
(7746-P with Base)



79
Fireman
With Hose
6" H
Base: 2"
(#79-P with Base)



199
Fireman
6" H



7763
Fireman
With Hose
10 1/4" H



6608
Policeman
Bust
9" H
Base: 4 1/4"
(#6608-W with Base)



C318
Nurse
5" H
Base: 2"
(#C318-P with Base)



C297
Medical Symbol
5 1/4" H Base: 2 1/4"
(#C297-P with Base)



9021
Modern
Technology
8 1/4" H



6823
Bull Market
3 3/4" W x 4 1/2" H Base: 2"
(#6823-P with Base)



9046
Bull & Bear
7 1/2" H x 11" L



9045
Bull & Bear
3 1/2" H x 5 1/4" L
Base: 1 1/2"
(#9045-M with Base)



9069
Bull & Bear
3 1/4" H x 6 1/4" L
(#9069-M with Base)

Awards & Figures - Professional

All figures are made in the USA and available in polished brass, polished nickel, satin nickel, satin flemish, pewter and more. Ask about our custom engraving.



7853
Female Victory
With Wreath
7" H
Base: 2 1/4"
(#7853-P with Base)



C376
Female Victory
With Cup
6 1/2" H



7816
Female Victory
7 1/4" W x 13" H



73
Female Victory
5 1/4" H



155
Female Victory
4 1/2" H



136
Female Victory
6 1/4" H



9043 Flying
Woman
8" L x 2 3/4" H



9018
Modern
Achievement
7 1/2" H
Base: 2 1/4"
(9018-P with Base)



9029
Woman
Arms Raised
12 3/4" H



197
Female
Victory
With
Wreath
7 1/4" H



9025
Woman
With Wings
9" H



7809
Female Victory
11 1/4" H



9023
Woman With
Display Board
9 1/2" H



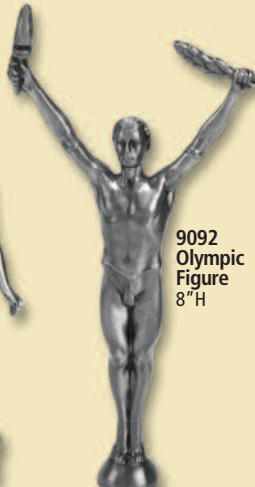
72
Olympic Figure
5 1/4" H



7815
Modern
Achievement
13 3/4" H



7787
Olympic
Figure
9 3/4" H



9092
Olympic
Figure
8" H



7812
Male
Victory
12" H



8042
Body Building
6" H



7841
Modern
Achievement
6" H



105
Victory
5 1/2" H

Awards & Figures - Professional

All figures are made in the USA and available in polished brass, polished nickel, satin nickel, satin flemish, pewter and more. Ask about our custom engraving.

**900
Drill
Sergeant**
9 1/4" H
Base: 2 3/4"
(900-P
with Base)



**850
Drill
Instructor**
8 1/2" H



9601 Coast Guard
4 1/4" H Base: 2 1/2"
(#9601-P with Base)



**9600
Marine Corp**
4 1/4" H



**9013
Patriot**
9 1/2" H



**9401
Minuteman**
7 1/2" H



**9012
Spartan**
6 1/4" H



**94
Marching
Band**
6" H



**7535
Parenting**
12" H



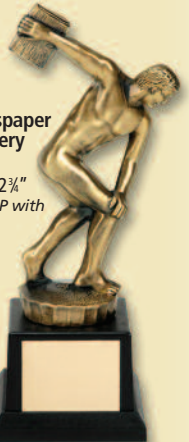
**173
Sailor**
5 1/4" H



**9061
Ship Captain**
7 1/2" H



**C161
Bottle Carrier**
8" H
Base: 2 3/4"
(C161-P with Base)



**9010
Newspaper
Delivery**
8 1/2" H
Base: 2 3/4"
(9010-P with
Base)



**9019 Blacksmith/
Metal Forging**
7" H



**C385
Farming**
6" H



**C303
Gold Miner**
7" H



**7728
Cowboy**
11 1/4" H



**9034
Town Crier**
9 1/4" H



**56
Indian Brave**
5 1/2" H



**9037
Indian Brave**
10 1/2" H

Awards & Figures - Sports

All figures are made in the USA and available in polished brass, polished nickel, satin nickel, satin flemish, pewter and more. Ask about our custom engraving.



9009
Male Track
9½" H



9005
Football
Player
10¼" H



7766
Female Bowler
9" H



9011
Male Bowler
7½" H



7762 Male Bowler
9¾" H Base: 4½"
(#7762-W with Base)



7852
Baseball
Player
6" H



9007
Female
Softball
Player
12½" H



9000
Baseball
Player
12¼" H



9003
Soccer
Player
9¾" H



9001
Tennis
Player
11¼" H



7784
Male
Basketball
Player
10¾" H



7785
Female
Basketball
Player
10¾" H



9004
Male
Basketball
Player
11½" H



9008
Female
Basketball
Player
11¼" H



9002
Golfer
13" H
(with Club)
Base: 4½"
(#9002-W with Base)

Awards & Figures - Sports

All figures are made in the USA and available in polished brass, polished nickel, satin nickel, satin flemish, pewter and more. Ask about our custom engraving.



9200 Basketball
7 3/4" H
Bottom Dia: 3 1/4"
Base: 4 1/4"
(#9200-W with Base)



7745 Football
10" H Bottom Dia: 4 3/4"



7782 Basketball
12" H
Bottom Dia: 4 1/2"



7764 Soccer Ball
10 1/2" H Bottom Dia: 4 1/2"
Base: 5"
(#7764-W with Base)



9201 Football
8" H Bottom Dia: 3 3/4"
Base: 4 1/4"
(#9201-W with Base)



9016 Outfielder
7 1/2" W x 13 1/4" H



9017 Boxing Glove
11 3/4" H
Bottom Dia: 3 1/2"
Base: 5"
(#9017-W with Base)



9015 Pitcher
7 1/2" W x 13 1/4" H



7877 BMX Racing
4 1/2" H

Base: 1"
(#7877-P with Base)



9014 Jockey
9 1/2" H



7771 Horse Racing
5 1/4" H Base: 2 1/2"
(#7771-W with Base)



7772 Horse Head
Height: 5" H
Base: 2 1/4"
(#7772-P with Base)



7857 Horse Head
4 1/4" H



7300 Trotter
7 1/2" L x 5 1/2" H



9040 Band Saw
7" H Base: 2 1/4"
(#9040-P with Base)



9041 Table Saw
5" H



195 Antique Automobile
5 1/4" W x 3 3/4" H



7879 Star
6" W x 6" H



7855 Funny Bone
2" W x 7" H

Awards & Figures - Sports

All figures are made in the USA and available in polished brass, polished nickel, satin nickel, satin flemish, pewter and more. Ask about our custom engraving.



209
Rifleman
5"H



117
Female
Table Tennis
5 1/4"H



7851
Hockey Player
4 1/2"H



9093
Scuba Diver
6 1/4"H



53
Archer
6"H



59
Baseball Player
6 1/4"H
Base: 2 1/4"
(#59-P with Base)



109
Football Kicker
5 1/4"H



C384
Male Track
5 1/4"H



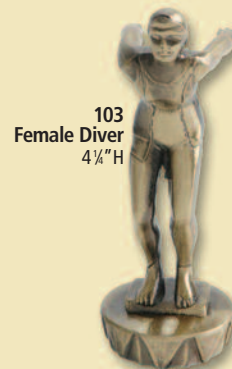
C378
Male
Golfer
5"H



9094
Female
Golfer
4 3/4"H



191
Golf Hack
5"H



103
Female Diver
4 1/4"H



200
Baseball
Batter
5 1/2"H

Awards & Figures - Miscellaneous

All figures are made in the USA and available in polished brass, polished nickel, satin nickel, satin flemish, pewter and more. Ask about our custom engraving.



95 Airplane
2 1/4" H



57 Antique Car
1 1/4" H



9106 Antique Car
2 1/4" H



78 Go-Kart
3" H



208 Go-Kart
3" H



119 Marlin
4 1/4" H Base: 2"
(#119-P with Base)



207 Trout
4 1/4" H



206 Bass
3 1/2" H



77 Bass
3" H



115 Fishing Boat
2 1/4" H



56-B Speed Boat
2 1/2" H



C237
Planter's Peanut Man
4 3/4" H



7383 Rabbit
3 1/2" H



74 Show Dog
3 1/2" H



C152-B Wolf
4 3/4" H



171
Buck/Deer
5 1/2" H



175
Musical Note
5 1/4" H



124 Darts
3 3/4" H



8035 Wreath
4 3/4" H



172 Star of David
3 3/4" H



7888
Golf Ball
2 1/2" H



7876B
Soccer Ball
2 1/2" H



8070 Last Place Champ
5" H

Awards & Figures - Miscellaneous

All figures are made in the USA and available in polished brass, polished nickel, satin nickel, satin flemish, pewter and more. Ask about our custom engraving.



7415 Eagle
4 1/2" H



9066 Eagle
6" H x 7 1/4" L



P9854 Eagle
3 3/4" H



187 Male Archer
3 3/4" H



188 Female Archer
3 3/4" H

9095 Eagle
4" H



46 Circus Performer
2 3/4" H



70 Marksman
4" H



80 Marksman
4 3/4" H



85 Male Bowler
7 3/4" H



9096 Male Bowler
5" H



C227 Skate Boarder
4 1/4" H



9098 Female Bowler
4 3/4" H



20 Male Bowler
5 1/4" H



86 Male Bowler
6" H



87 Female Bowler
6" H



68 Female Bowler
6" H

9100 Bowling Pins
2 3/4" H



8040 Bowling Pins
4" H

9101 Bowling Pins
2 1/2" H



67 Male Bowler
6" H



9022 Dance Couple
6 1/4" H
Base: 2 1/2" (#9022-P with Base)



8036 Modern Dance
6" H



6837 Ballerina
3 3/4" H x 1 1/4" W



C311 Ballet
7" H

Awards & Figures - Miscellaneous

All figures are made in the USA and available in polished brass, polished nickel, satin nickel, satin flemish, pewter and more. Ask about our custom engraving.



C332 Elephant
5"H x 5"L



145 Elephant
4"H x 4½"L



P9441 Lighthouse
3½"W x 7"H
6812 Sq. 1/H



6812 Lighthouse
2"W x 5"H



9056 Lighthouse
3½"H



9057 Lighthouse
5½"H



9058 Lighthouse
7¼"H



6496 Sitting Girl
8"H



5256 Cherub
4¾"H



9027 Mohawk Indian
5¼"W x 7¼"H



9033 Indian Chief
6"H



9059 Sailboat
3½"H



9060 Sailboat
6"H



9052 Pelican
3½"H



9050 Dolphin
4¾"H



9051 Flamingo
4¾"H



7574 Griffin
5¼"H



9068 Bull Dog
4½"L x 4"H



9047 Elephant
5½"H x 7¼"L



9031 Buddha
3"H



9032 Buddha
7½"H



622 Horse
5½"H



7541 Bronco
6¾"H



9055 Crab
3¾"L x 5"W



9053 Lobster
2¼"W x 6"H



9054 Alligator
2½"W x 5¼"L

Awards & Figures - Miscellaneous

All figures are made in the USA and available in polished brass, polished nickel, satin nickel, satin flemish, pewter and more. Ask about our custom engraving.

567 Horse
5" H x 7" L

9088 Horse
8 1/4" H x 8 1/4" L

7319 Horse
6 1/2" H x 8 1/2" L

9087 Horse
9 1/2" H x 11" L

6606 Sheep
2 1/2" H x 4 1/4" L

164 Parakeet
6 1/4" H

C320 Buffalo
5 1/2" H x 8 1/2" L

9048 Elephant
14 1/2" H x 14 1/2" L

7775 Wide Mouth Bass
6 1/2" H

7328 Boxer
6 1/4" H x 6 1/4" L

7686 Dachshund
5 3/4" H x 8 1/4" L

C380 Marlin
8" H
Base: 2 3/8" (#C380-P with Base)

7769 Trout
5 3/4" H

P7067 Greyhound
2" H x 5" L

6607 Sitting Duck
5 1/2" H x 12" L

7688 Owl
5 1/4" W x 10 3/4" H

7717 Duck
8 3/4" W x 9 3/4" H
Base: 2 1/4" (#7717-W with Base)

7684 Duck
7 1/4" W x 10 3/8" H
Base: 2 1/4" (#7684-P with Base)

Awards & Figures - Miscellaneous

All figures are made in the USA and available in polished brass, polished nickel, satin nickel, satin flemish, pewter and more. Ask about our custom engraving.



C622
Pieta
7" H



6615
St. Francis
13 1/4" H



R10
Jesus Bearing
Cross
4" H



R4
Joseph Bust
5" H



R5
Mary Bust
4 1/2" H



R14
Blessed
Mother At
Prayer
3 1/4" H



R15
Joseph and
Baby
Jesus
3 1/4" H



R9
Mother
Mary
4 1/2" H

R11
Blessed
Father
7 1/2" H



R6
Mary
Plaque
5 1/4" H x
4 1/4" W



9049
Blessed
Mother
7" H



R20
Mary
Bust
5 1/2" H



R21
Jesus
Bust
5 1/2" H



R12 Pieta
Holy Water
Plaque
5 1/2" H x
4 1/4" W



R30
Crucifixion
Holy Water
Plaque
6 1/2" H x
4 1/4" H



655
Cross
2 1/2" H



C392
Eagle
2 1/2" H



7454
Eagle
2 1/2" H



355
Eagle
2 1/2" H



6586
Eagle in
Flight
4 1/4" W x 1 1/4" H



348
Eagle
2" H

C368
Face Knob
3" H



9105 Logo Stand
4 1/4" H



9107
Figure Stand
1 1/4" W x 2 1/2" H



9083 Small
Trophy Cup
2 1/2" H



9085
Trophy Cup
3 1/2" H



9081-M8
Trophy Cup
With Water Polo
6 1/4" H



9081-M13
Trophy Cup With
Female Diver
7" H



9082-M15
Trophy Cup With
Basketball Player
9 1/2" H Base: 2"
(#9082-M15-M
With Base)



9084-M5
Trophy Cup
With Gymnast
9" H Base: 2"
(#9084-M5-W
With Base)



9084-M1
Trophy Cup With
Newspaper Delivery
8" H



C387
Chalice
5 1/2" H



9080-M3
Trophy Cup With
Male Track
8 1/2" H



9080-M14
Trophy Cup With
Male Diver
8" H



9080-M11
Trophy Cup
With Eagle
9 1/4" H



C379-9102
Trophy Cup
With Car
8" H



9082-M2
Trophy Cup
With
Wrestler
7 1/2" H



9082-M6
Trophy Cup
With
Tennis
Player
8" H

Souvenirs

Historic Building Replicas – Historic & Patriotic Souvenirs – Busts & Statues of Famous Americans
New York Souvenirs – School & Team Mascots

- **Made in the USA**
- **Molded metal (stand alone or mounted on bases made of other materials)**
 - **We can imprint most of our stock pieces or mount them on a base that can be printed**
 - **Stock items can be modified to suit your custom needs**
 - **Fully custom designed products available**
 - **Firm quotes**
 - **Pre-production proofs**

One of the largest segments of our business is providing custom and stock souvenirs for tourist attractions, schools, museums, zoos, aquariums, cities, sports teams, etc. All design work and production is done at our plant here in the United States.

American tourists are becoming increasingly sensitive to the country of origin for souvenirs they purchase at US locations. We manufacture all of the products we sell right here in our factory in the United States and all products have a "Made in USA" label on them.

For large-scale orders, we will be happy to meet with buyers and/or the salesperson handling their account to help design specific souvenirs and/or a full program.

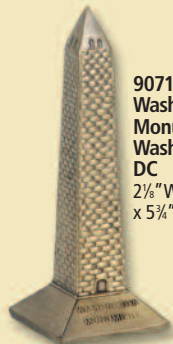
All design work and production is done at our factory here in the United States. For custom designs, our designers work from photos, drawings, your idea, a description of what you want, or we can work from your existing design. A basic art layout is prepared for your review. After you and our staff agree on a final design and product specifications, we prepare a final art proof if needed and quote your project. If you decide to go ahead with the project, we will then produce a pre-production proof model for your approval prior to final production.

Your piece can be provided with a felt bottom or mounted on wood, marble, high quality plastic or other special material bases. Various methods of imprinting are available, including molding in the metal, pad printing, attaching etched or silk-screened plates or attaching any of a wide variety of custom or stock medallions.

Design and tooling charges can range from hundreds of dollars to thousands. Production time for custom pieces can take anywhere from one to three months.

The examples below and on the following pages are just a few of the many stock and custom souvenir pieces we have created.

P1250
Lincoln Memorial
4 1/4" W x 6 1/4" H
Imprint Area: 3 3/4" x 2"



9071
Washington
Monument
Washington,
DC
2 1/8" W
x 5 3/4" H



1150
Statue
of Liberty
11 1/2" H



800
Empire
State
Building
8" H

Souvenirs - New York

Genuine metal monuments and souvenirs, made in the USA.



7881 Statue of Liberty Bust
8"H x 4"W



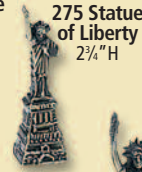
634 Statue of Liberty Bust
7 3/4"H



351 Statue of Liberty
3 3/8"H



525 Statue of Liberty
5 1/4"H



275 Statue of Liberty
2 3/4"H



534 Statue of Liberty
5 3/4"H



850 Statue of Liberty
8 1/4"H



634-M Liberty Bust on Marble Base
10 1/4"H
(Including base)
Plate Area:
2"W x 1"H



690 Statue of Liberty
5"H



P9489 Statue of Liberty Bank
7 3/4"H
Imprint Area:
3 3/4" x 1 1/4"



950 Statue of Liberty
9 1/2"H



1150L Statue of Liberty
11 1/2"H



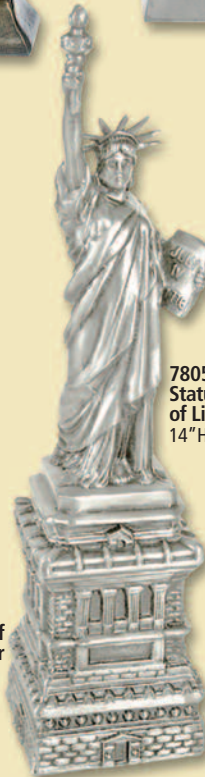
700 Statue of Liberty
7"H



525-CH Statue of Liberty Card Holder
7"H



925 Statue of Liberty
9 1/4"H



7805 Statue of Liberty
14"H



1750 Statue of Liberty
17 1/2"H



1150 Statue of Liberty
11 1/2"H



1450 Statue of Liberty
14 1/2"H



725 Statue of Liberty
8"H



693 Statue of Liberty Letter Opener
7"H



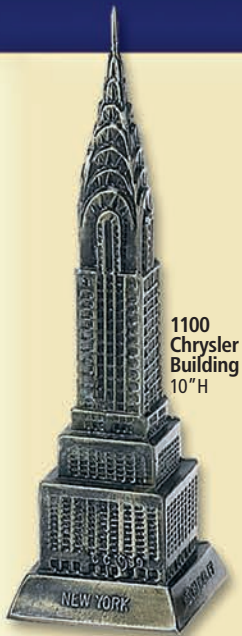
691 Statue of Liberty Letter Opener
7 1/8"H



402 New York City Landmark Bank
4"H

Souvenirs - New York

Genuine metal monuments and souvenirs, made in the USA.



1100 Chrysler Building 10" H



675 Chrysler Building 6 3/4" H



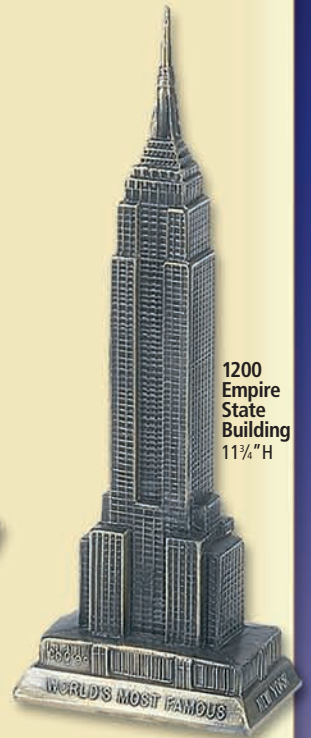
800 Empire State Building 8" H



825 Empire State Building 8 1/4" H



1050 Empire State Building 9 1/2" H



1200 Empire State Building 11 1/4" H

326 World Trade Center 2 1/2" H



325 Empire State Building 3 1/4" H



600 Empire State Building 6" H



400 New York Big Apple Bank 3 3/4" H



401 New York Big Apple 2 1/2" H



478 Flat Iron Building 4 1/8" H



1050-G Empire State Building With King Kong 9 1/2" H

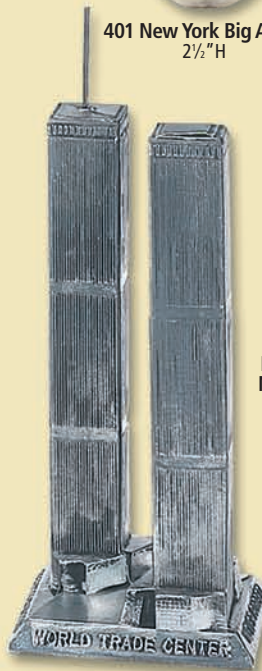


600-G Empire State Building With King Kong 6" H



6602 Firemen Raising Flag 14" H (flag included)

6600 World Trade Center 10" H



6601 World Trade Center 8 1/4" H



P9028 Bankers Trust New York, NY 3 1/4" W x 6" H



Souvenirs - Washington DC

Genuine metal, made in the USA. Also used as bookends.



P1250
Lincoln Memorial
4 1/4" W x 6 1/4" H
Imprint Area: 3 3/4" x 2"



P9203
Lincoln Memorial
4 1/4" W x 7" H
Imprint Area: 4 1/4" x 2"

694
Washington Monument
Letter Opener
7" L x 7/8" W



9074
White House
Washington, DC
3" L x 1 1/4" W x 1 1/2" H



P9212
Pentagon
Arlington, VA
5 1/4" L x 5 1/4" W x 1 3/4" H



9076
Jefferson Memorial
Washington, DC
2 1/2" L x 2 1/4" W x 1 1/4" H



9075 Lincoln Memorial
Washington, DC
2 1/2" L x 2 1/4" W x 1 1/2" H



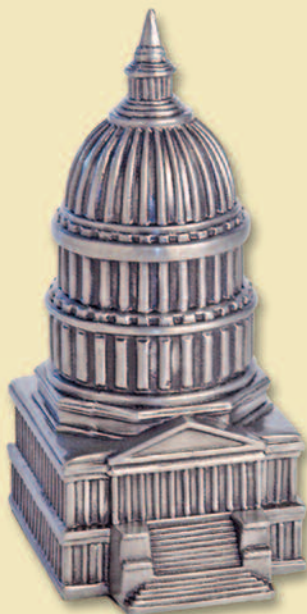
9077
Capitol Bldg. Washington, DC
3 1/2" L x 1 1/4" W x 2" H



9078
Capitol Bldg.
Washington, DC
3 1/2" L x 1 1/4" W x 2 1/2" H



9073 Capitol Dome
Washington, DC
3" W x 5" H

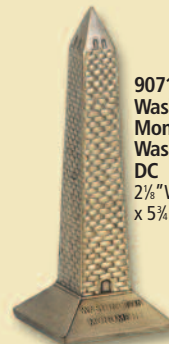


6805
Capitol Dome
Washington, DC
5 1/2" W x 10" H

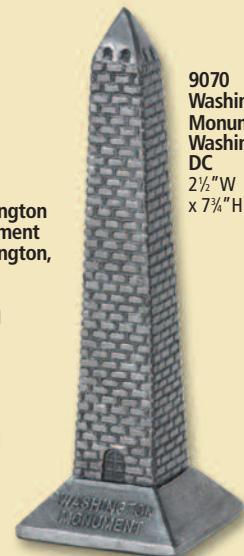
9072
Washington Monument
Washington DC
1 1/4" W
x 3 1/2" H



9071
Washington Monument
Washington, DC
2 1/2" W
x 5 3/4" H



9070
Washington Monument
Washington, DC
2 1/2" W
x 7 3/4" H



Souvenirs - Buildings & Monuments

Genuine metal, made in the USA. Also used as bookends.



6804
Transamerica Bldg.
San Francisco, CA
1½"W x 5¼"H



1870
Sears Tower
Chicago, IL
1¼"W x 6"H



6464
Sears Tower
Chicago, IL
1½"W x 5½"H



P9055 Independence Square
Philadelphia, PA
3¾"W x 4¼"H



6808 Mt. Rushmore
5½"L x 2¼"W x 3½"H
Imprint Area: 3" x 2"



6807 Mt. Rushmore
3"L x 1½"W x 1½"H
Imprint Area: 3" x ½"



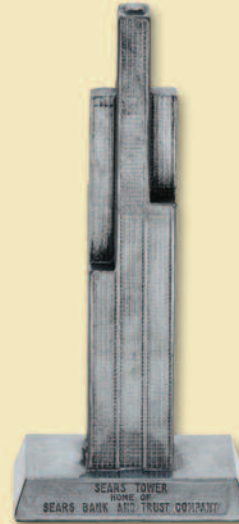
6427
John
Hancock
Bldg.
Chicago, IL
1½"W x 4¾"H



P9547
Washington State
Capitol Bldg.
Olympia, WA
5½"L x 3½"W
x 4¾"H



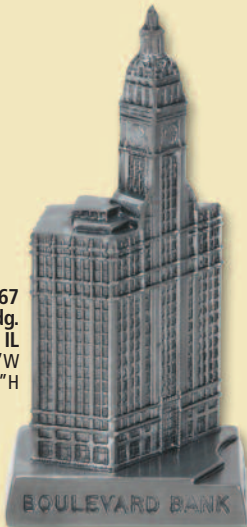
1880
Sears Tower
Chicago, IL
1¾"W x 7¾"H



P9466
Sears Tower, Chicago, IL
3½"L x 2¼"W x 7¾"H

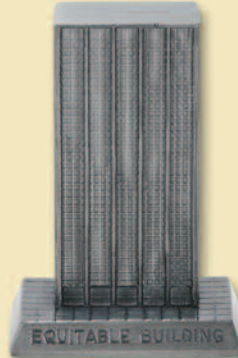


6809 Gateway Arch
St. Louis, MO
3"W x 3½"H

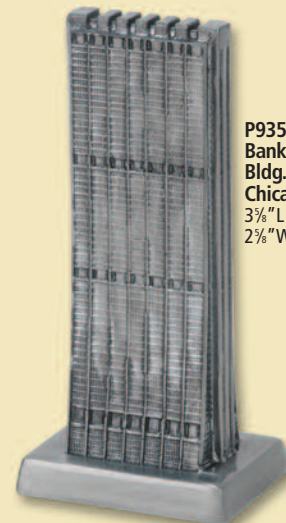


P9467
Wrigley Bldg.
Chicago, IL
3½"L x 2¾"W
x 7¼"H

P9305 Equitable Bldg.
Chicago, IL
2¾"L x 3¾"W x 5¼"H



P9356
Bank One
Bldg.
Chicago, IL
3¾"L x
2¾"W x 7¾"H



Souvenirs - Historic & Patriotic

Genuine metal monuments and souvenirs, made in the USA



P1225 The Minute Man
5 1/4" W x 5 3/4" H
Imprint Area: 1 1/2" x 1 1/2"



P9874 Spirit of '76
5" W x 6" H Imprint Area: 1 3/4" x 1 1/4"



P9291 Buffalo Bill Cody
Cody, Wyoming
4 1/2" W x 5 1/2" H

P1189 Cannon
5 1/2" L x 3 3/8" W x 3" H



P9426 C.S.S. David Confederate
Torpedo Boat
6 1/2" L x 2 1/4" W x 3" H



P9354 Golden Spike
3 3/4" W x 5 1/2" H
Imprint Area: 3" x 1/2"



P1223 Patriotic Drum
3 3/4" H x 4" W



8023/8034 Love Statue
3 3/4" H



P1013 Liberty Bell
3 3/4" W x 4" H
Imprint Area: 1 1/2" x 1"



P1247 U.S.S. Constitution/Old Ironsides
6 1/4" W x 6" H

P9106 Benjamin Franklin
3" W x 7 1/2" H
Imprint Area: 2 1/4" x 3/4"



P9140 Minute Man
Concord, MA
2 1/2" W x 8" H
Imprint Area: 1 1/4" x 2"



783 Flag Raising
at Iwo Jima
8 1/2" L x 3 3/4" W
x 16" H (W/Flag)



P9351 C.S.S. Hunley Submarine
8" L x 2 1/4" W x 2 1/4" H Imprint Area: 4" x 5/8"



425 Flag Raising
at Iwo Jima
4 1/4" L x 1 1/2" W
x 5 1/2" H
(W/Flag)



569 Lincoln Log Cabin
4 1/4" L x
2 1/2" W x 3 1/4" H



P9313 Christopher Columbus
2 1/2" W x 4 1/4" H
Imprint Area: 1 3/4" x 1"

CHRISTOPHER COLUMBUS

Souvenirs - Historical Figure Busts

Genuine metal banks, made in the USA. Also used as bookends or souvenirs.



6806 Barack Obama
5 1/4" H Imprint Area: 2" x 1 1/4"



P1120 John F. Kennedy
5 1/4" H Imprint Area: 2" x 1 1/4"



P1067 Dwight D. Eisenhower
5" H Imprint Area: 2" x 1 1/4"



P9179 Theodore Roosevelt
5 1/4" H Imprint Area: 2" x 1 1/4"



6810 Harry S. Truman
5 1/4" H Imprint Area: 2" x 1 1/4"



P1211 Abraham Lincoln
5 1/4" H Imprint Area: 2" x 1 1/4"



P1108 Abraham Lincoln
5 1/4" H Imprint Area: 2" x 1 1/4"



P9380 Benjamin Franklin
5 1/4" H Imprint Area: 2" x 1 1/4"



P1249 Thomas Jefferson
5 1/4" H Imprint Area: 2" x 1 1/4"



P1078 Thomas Edison
5" H Imprint Area: 2" x 1 1/4"



P1055 Robert E. Lee
5 1/2" H Imprint Area: 2" x 1 1/4"



P1212 George Washington
5 1/4" H Imprint Area: 2" x 1 1/4"



P9374 Alexander Hamilton
5 1/4" H Imprint Area: 2" x 1 1/4"



C312 Elvis Presley
7" H
Imprint Area: 1 1/2" x 1"

P1120-M
John F. Kennedy
7 1/4" H
Plate Area: 2" x 1"



P1210
Franklin D. Roosevelt
4 1/4" H
Imprint Area:
1 1/2" x 1 1/2"



All busts
are available
on a base
with an attachable
engraved plate.

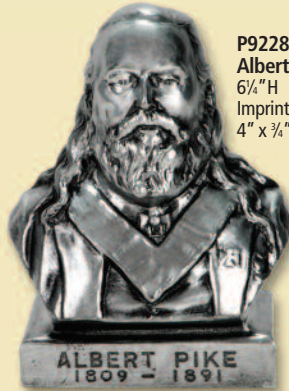
Souvenirs - Historical Figure Busts

Genuine metal banks, made in the USA. Also used as bookends or souvenirs.

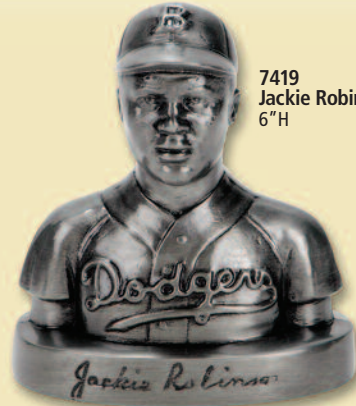
9035 Ludwig Van Beethoven
6"H
Imprint Area:
2" x 1 1/4"



P9228 Albert Pike
6 1/4"H
Imprint Area:
4" x 3/4"



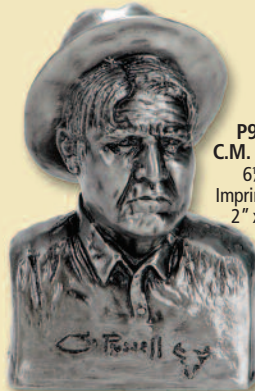
7419 Jackie Robinson
6"H



P1072 Renè La Salle
5 1/4"H
Imprint Area:
2 1/2" x 1"



P9280 C.M. Russell
6 1/2"H
Imprint Area:
2" x 1 1/4"



P9562 Quaker
5 1/4"H



P9107 Annie Costia
5"H
Imprint Area:
1 1/4" x 1"



P1009 Indian Chief
5"H
Imprint Area:
2 x 1 1/4"



P9092 Indian Brave
6 1/4"H
Imprint Area: 3" x 1"



P9259 Chief Pontiac
6 1/2"H
Imprint Area: 2 3/4" x 1 1/4"



Souvenirs - School Mascots

Genuine metal banks/bookends, made in the USA.



P9315 Michigan Wolverines
5 1/2" H



P9413 Iowa State Cyclones
7" H



P9318 Wisconsin Badgers
6" H



P9346 Wyoming Cowboys
6" H



P9348 Airforce Academy
6 1/4" H



P9314 Purdue Boiler Makers
7" H



P9285 Arkansas Razorbacks
4" H



P9344 Nebraska Cornhuskers
5 1/4" H



P9269 University of Texas
5 1/4" H



P9326 Oregon State Beavers
6" H



P9855 Iowa Hawkeyes
5 1/2" H



P9319 Notre Dame Fighting Irish
6" H



P9345 Oklahoma University
6 1/4" H



P9300 Alabama Crimson Tide
6 1/4" H



P9277 Rice Owls
5 1/4" H



P9325 Oregon Ducks
6 1/4" H



P9276 LSU Tigers
4" H



P9316 Michigan State Spartans
7" H



P1146 Bear
6 1/4" H



P9312 Tiger
6 1/4" H



P1147 Bulldog
6" H



P9340 Georgia Tech Yellow Jackets
6 1/4" H



P9317 Minnesota Golden Gophers
6" H

Souvenirs & Banks - Miscellaneous

Genuine metal, made in the USA.



P9907
United States Bank
1 1/2" W x 4 1/4" L x 3 1/4" H



P9251 Horse & Drummer
5 1/4" H



553 Old Shoe House
5 1/4" H



P9863
Money Bag
3 1/2" H



562 Cowboy Boot Bank
5" H



P9298 State of Washington Bank
3 1/2" H x 5" W



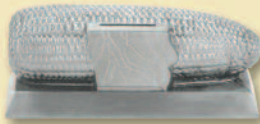
P9030 State of Arizona Bank
4 1/4" H x 4" W



P9221
Hawaiian Chief Bank
5 1/4" H x 4" W



P9352 Graduation Bank
5 1/2" H x 5" W



P1096 Iowa Corn
2 1/2" H x 6" L



P9294
Idaho Potato
4" H x 4 1/4" L



P9493
Idaho Log
3" H x 5" W



P1101 Santa on Chimney
6 1/4" H



P1079 Sleeping Santa
6" H



P9270
Boat Captain Bank
6 1/2" H x 4 1/4" W



P9411
Gold Miner Bank
6 1/2" H x 4" W



6428
Bear & Cubs
5 1/2" H



C248/C249 Frog & Shell
7 1/4" L x 3 1/2" H



7759
Bank Book
5 1/2" H

Banks

Antique & Classic Cars – Trains – Trucks – Tractors – Construction Vehicles
Other Transportation Vehicles – Animals – Miscellaneous

- **Made in the USA**
- **Molded metal (stand alone or mounted on bases made of other materials)**
- **We can imprint most of our stock pieces or mount them on a base that can be printed**
 - **Stock items can be modified to suit your custom needs**
 - **Fully custom designed products available**
 - **Firm quotes**
- **Pre-production proofs**

Banks are one of our most popular products. We offer numerous stock designs. Many of them can be imprinted with a logo and/or copy or even modified to suit your needs.

We also produce a large number of custom designed banks every year for a variety of clients. All design work and production is done at our factory here in the United States. For custom designs, our designers work from photos, drawings, your idea, a description of what you want, or we can work from you existing design. A basic art layout is prepared for your review. After you and our staff agree on a final design and product specifications, we prepare a final art proof if needed and quote your project. If you decide to go ahead with the project, we will then produce a pre-production proof model for your approval prior to final production.

Your piece can be provided with a felt bottom or mounted on wood, marble, high quality plastic or other special material bases. Various methods of imprinting are available, including molding in the metal, pad printing, attaching etched or silk-screened plates or attaching any of a wide variety of custom or stock medallions.

For custom designs, design and tooling charges can range from hundreds of dollars to thousands. Production time for custom pieces can take anywhere from one to three months.

The examples below and on the following pages are just a few of the many stock and custom bank pieces we have created. A few of the pieces pictured on pages 34 - 47 are not banks - they are just replicas.

P1335
1936 Ford
Roadster Convertible
6½" L x 2¾" W x 2½" H
Imprint Area: 1½" x 1"



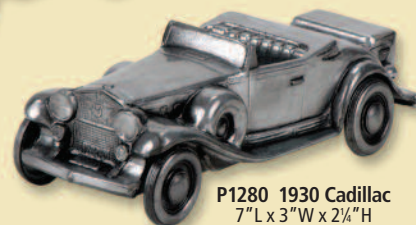
P1235 **1929 Ford Model A**
6" L x 2¾" W x 2¾" H
Imprint Area: 1½" x 1½"



P1230 **1930 Duesenberg**
6¾" L x 2¾" W x 2¾" H
Imprint Area: 1½" x 1"



P1280 **1930 Cadillac**
7" L x 3" W x 2¾" H
Imprint Area: 1½" x 1"



Banks - Antique & Classic Cars

Genuine metal banks, made in the USA.



P1362
1906 Oldsmobile
5" L x 2 3/4" W x 3" H
Imprint Area: 1 1/4" x 1 1/2"



P1121-B
1902 Nash Rambler
5 1/4" L x 2 3/4" W x 3 1/4" H
Imprint Area: 1 1/2" x 1 1/4"



P1360
1902 Nash Rambler
6 1/4" L x 3" W x 3 1/4" H
Imprint Area: 1" x 1 1/2"



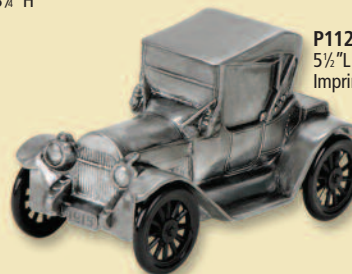
P1380
1915 Ford Omnibus
5 1/4" L x 2 3/4" W x 3 1/2" H



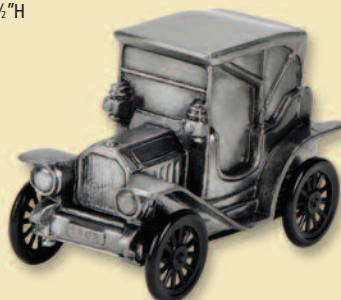
P1107
1926 Ford Model T
5 1/4" L x 3" W x 3 1/2" H



P1187
1908 Cadillac
5 1/2" L x 2 3/4" W x 3 1/4" H



P1125 1915 Chevy
5 1/2" L x 2 3/4" W x 3" H
Imprint Area: 1 1/2" x 1 1/2"



P1200
1908 Buick
5" L x 2 1/2" W x 3 1/2" H
Imprint Area: 1 1/4" x 1 1/4"



P1171
1912 Packard
5 1/4" L x 2 1/4" W x 3 1/2" H
Imprint Area: 1 1/2" x 1 1/4"



P1155
1910 Stanley Streamer
5 1/4" L x 2 3/4" W x 3 1/2" H
Imprint Area: 1 1/4" x 1 1/4"



P1165
1917 Pierce Arrow
6" L x 2 1/4" W x 3" H
Imprint Area: 1 1/2" x 1 1/4"



P1116
1924 Chrysler
6 1/4" L x 2 3/4" W x 3" H
Imprint Area: 1 1/4" x 2 1/2"



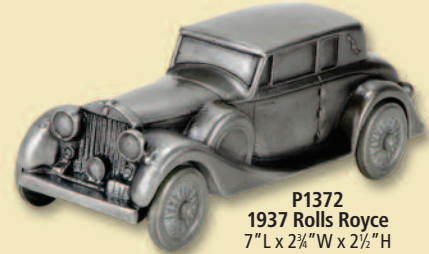
P1106
1927 Ford Model T
5 1/2" L x 2 3/4" W x 3 1/2" H
Imprint Area: 1 1/4" x 3"

Banks - Antique & Classic Cars

Genuine metal banks, made in the USA.



**P1305 1946 Chrysler
Town & Country**
7" L x 3" W x 2½" H
Imprint Area: 1½" x 1¼"



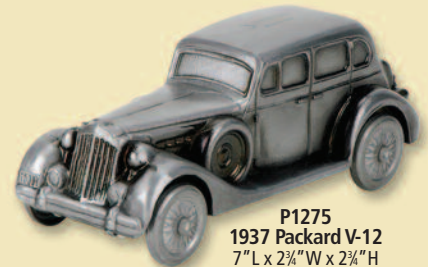
**P1372
1937 Rolls Royce**
7" L x 2¾" W x 2½" H
Imprint Area: 1¼" x 2¼"



**P1291
1941 Lincoln
Continental**
7¾" L x 3" W x 2½" H
Imprint Area: 1" x 1¾"



**P1243
1936 Cord**
7" L x 2¾" W x 2¼" H
Imprint Area: 2" x 1¼"



**P1275
1937 Packard V-12**
7" L x 2¾" W x 2¾" H
Imprint Area: 2¼" x 1½"



**P1307
1953 MG**
6½" L x 2¾" W x 2½" H
Imprint Area: 1½" x 1¼"



**P1133
1926 Ford Model T**
5½" L x 2¾" W x 3¼" H
Imprint Area: 2¾" x 1¼"



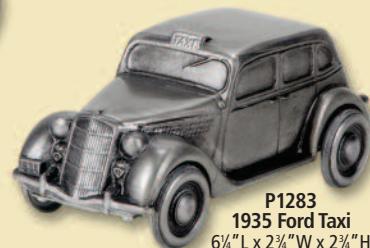
**P1177
1926 Pontiac**
5¾" L x 2¾" W x 3" H
Imprint Area: 1¾" x 1¾"



**P1183
1924 Chrysler**
6¾" L x 2¾" W x 3" H
Imprint Area: 2¾" x 1¼"



**P1215
1914 Dodge**
5" L x 2¾" W x 3" H
Imprint Area: 1½" x 2"



**P1283
1935 Ford Taxi**
6" L x 2¾" W x 2¾" H
Imprint Area: 1¾" x 1¼"



**P1364
1948 Pontiac
Stream Liner**
7" L x 2½" W x 2¼" H
Imprint Area: 2½" x 1½"
(Not a bank)



**P1392
1949 Ford Woody
Station Wagon**
7¾" L x 2¾" W x 2¾" H
Imprint Area: 2½" x 1½"



**P138
Indy Speedway
Race Car**
6" L x 3¾" W x 2½" H
Imprint Area: 5½" x ¾"

Banks - Antique & Classic Cars

Genuine metal banks, made in the USA.

P1379 1955 Chrysler New Yorker
8" L x 3"W x 2½"H
Imprint Area: 2¼" x 1¼"



P1409 1950's Sedan
7½"L x 3"W x 2½"H
Imprint Area: 2¼" x 1¼"

P1368 1953 Nash Rambler
7¾"L x 3"W x 2¾"H
Imprint Area: 2½" x 1½"



P1285 1955 Jaguar With Plates
7"L x 2½"W x 2¼"H
Imprint Area: 1¾" x 1½"

P1341 1953 Buick
7¾"L x 3"W x 2¼"H
Imprint Area: 1¾" x 1¼"



P1403 1954 Packard Clipper
8"L x 2¾"W x 2½"H
Imprint Area: 1¾" x 2¼"

P1402 1954 Chrysler New Yorker
8"L x 3"W x 2½"H
Imprint Area: 2" x 2¼"



P1343 1955 Cadillac Fleetwood
8"L x 3"W x 2½"H
Imprint Area: 2" x 2½"



P1408 1955 Chevy
8"L x 2¾"W x 2½"H
Imprint Area: 1¾" x 2½"

P1389 1953 Pontiac Deluxe Catalina
7¾"L x 3"W x 2½"H
Imprint Area: 1½" x 2"



P1295 1954 Chevrolet
7¾"L x 2¾"W x 2¼"H
Imprint Area: 2¼" x 1½"



P1400 1956 Ford Customline
7¾"L x 3"W x 2½"H
Imprint Area: 1¾" x 2½"



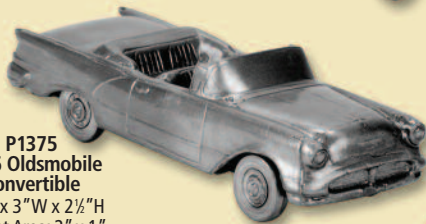
P1373 1957 Chevy Convertible
7¾"L x 2¾"W x 2½"H
Imprint Area: 1¾" x ½"



P1375 1956 Oldsmobile Convertible
8¾"L x 3"W x 2½"H
Imprint Area: 2" x 1"



P1388 1959 Cadillac El Dorado Convertible
8½"L x 3¾"W x 2¼"H
Imprint Area: 2" x 1½"



P1374 1937 Jeep Willys
8"L x 3"W x 3¼"H
Imprint Area: 3½" x 2"



P1318 1956 Cadillac
8"L x 3"W x 2¼"H
Imprint Area: 2 x 2¼"



P1377 1957 Ford Station Wagon
7¾"L x 3"W x 2½"H
Imprint Area: 2¼" x 1¾"



Banks - Antique & Classic Cars

Genuine metal banks, made in the USA.



P1405
1954 Cadillac Fleetwood
8" L x 2 3/4" W x 2 3/4" H
Imprint Area: 1 3/4" x 2 1/2"



P1353
1958 Studebaker Hawk
7 1/2" L x 2 3/4" W x 2 1/4" H
Imprint Area: 1 1/4" x 1 1/4"



P1277
1955 Thunderbird
7" L x 2 3/4" W x 2 1/4" H
Imprint Area: 1 1/2" x 1 1/4"



P1313
1955 Ford Fairlane
7 3/4" L x 3" W x 2 1/4" H
Imprint Area: 1 1/2" x 2 1/2"



P1386
1955 Chevy
7 1/2" L x 3" W x 2 1/2" H
Imprint Area: 1 1/4" x 2"



P1300
1954 Oldsmobile
7 1/2" L x 3" W x 2 1/2" H
Imprint Area: 2" x 2"



P1369
1964 Pontiac GTO
7 3/4" L x 3" W x 2" H
Imprint Area: 2" x 2"



P1319
1965 Mustang
7" L x 2 3/4" W x 2 1/4" H
Imprint Area: 1 3/4" x 1 1/4"



P1365
1967 Chevy Camaro
7" L x 2 3/4" W x 2" H
Imprint Area: 1 3/4" x 1 1/4"



P1371
1965 Mustang Fastback
7" L x 2 1/2" W x 2" H
Imprint Area: 1 3/4" x 1 1/2"



P1323
1957 Chevy Belair
7" L x 3" W x 2 1/4" H
Imprint Area: 1 3/4" x 2"



P1355
1956 Chevy
7 3/4" L x 3" W x 2 1/2" H
Imprint Area: 2" x 1 3/4"

P1321
1977 Volkswagen Bug
6 1/2" L x 2 3/4" W x 2 1/2" H
Imprint Area: 1 1/2" x 2"



P1367
1963 Corvette Stingray
6 3/4" L x 2 1/2" W x 2" H
Imprint Area: 1 3/4" x 1 1/4"

Banks - Trucks, etc.

Genuine metal banks, made in the USA.

P1292
1951 Chevy Pick-Up
7½" L x 3" W x 3" H
Imprint Area: 1½" x 1"



P9841
Dodge Pickup Truck
6½" L x 2½" W x 2½" H
Imprint Area: 1½" x ¾"
(Not a Bank)



P9850
GMC Pickup Truck
6½" L x 2¾" W x 2½" H
Imprint Area: 1½" x ¾"
(Not a Bank)



P1378 Studebaker
Pickup Truck
6½" L x 2½" W
x 2½" H
Imprint Area: 1½"
x 1"
(Not a Bank)



P1273
1928 Chevy Truck
6" L x 2¾" W x 3" H
Imprint Area: 1" x 1¼"



P1376
Jeep Convertible
6¾" L x 3½" W x 2" H



P1289
Chevy Pickup Truck
7" L x 3" W x 3" H
Imprint Area: 2" x 1¼"

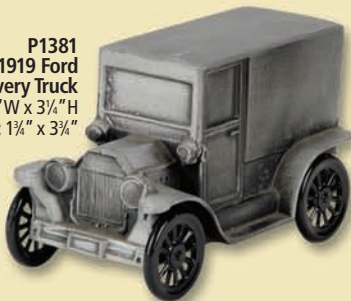


P9842
Ford Pickup Truck
6¾" L x 2½" W x 2½" H
Imprint Area: 1½" x ¾"
(Not a Bank)

P1293
1953 Ford Pickup
7½" L x 2¾" W x 3" H
Imprint Area: 1¾" x 1"



P1381
1919 Ford
Delivery Truck
5¼" L x 2¾" W x 3¼" H
Imprint Area: 1¾" x 3¼"



P1309
1934 Ford Panel Truck
6" L x 2¾" W x 3" H
Imprint Area: 3" x 1½"



P1349
1915 Police
Paddy Wagon
5½" L x 2¾" W x 3½" H
Imprint Area: 3¼" x 2"

6815
Armored Truck
7" W x 3" W x 3" H
Imprint Area: 2½" x 1½"



P1157
Armored Car
6" L x 2¾" W x 3½" H
Imprint Area: 3¼" x 2"

Banks - Trucks, etc.

Genuine metal banks, made in the USA.



P1347
1919 US Mail Truck
5½" L x 2¾" W x 3¼" H
Imprint Area: 1¼" x 3½"



P1219
1906 Mack Truck
5¼" L x 2¾" W x 3¼" H
Imprint Area: 1¼" x 1½"



P9847 Dodge
Stake Truck
7¼" L x 2¾" W x 2½" H
Imprint Area: 1¼" x ¾"



P9817
Passenger Bus
7¼" L x 2¾" W x 3¼" H
Imprint Area: 4" x 2¼"



P9487
Jeep
5½" L x 2¾" W x 3¼" H
Imprint Area: 1½" x 1"



P9878 Ford Stake Truck
7" L x 2¾" W x 2½" H
Imprint Area: 1½" x ¾"
(Not a Bank)



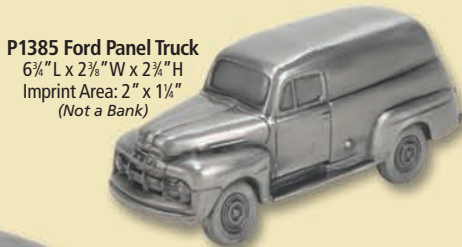
P9530
Propane Truck
7¼" L x 3" W x 3" H
Imprint Area: 2" x 1"



P9805 Studebaker
Stake Truck
8" L x 3" W x 2½" H
Imprint Area: 1½" x 1"



P1311 1928
Beer Keg Truck
6¼" L x 2¾" W x 2¾" H
Imprint Area: 1½" x 1¼"



P1385 Ford Panel Truck
6¼" L x 2¾" W x 2¾" H
Imprint Area: 2" x 1¼"
(Not a Bank)



P9542 Propane Truck
8¼" L x 2¾" W x 3" H
Imprint Area: 1" x 3"



P1359
Logo Van
6" L x 2¾" W
x 3¼" H
Imprint Area:
2½" x 1½"



P9840 Oil Tanker
7¼" L x 2½" W x 3" H
Imprint Area: 3" x 1"



P9826
Mack Oil Tanker
8" L x 2¾" W x 2½" H
Imprint Area: 4" x ½"



6825
Cargo Van
7½" L x 2¾" W
x 3" H
Imprint Area:
2¼" x 1"



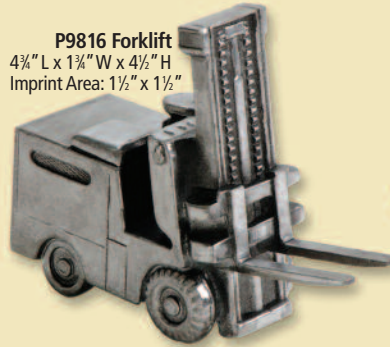
P1239 Ahrens Fox Pumper
6" L x 2¾" W x 2½" H
Imprint Area: 1½" x 1¼"

Banks - Trucks, etc.

Genuine metal banks, made in the USA.



P9440
Logging Truck
 6 3/4" L x 2 1/4" W x 2 3/4" H
 Imprint Area:
 6" x 1"



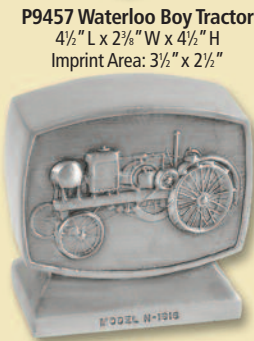
P9816
Forklift
 4 3/4" L x 1 3/4" W x 4 1/2" H
 Imprint Area: 1 1/2" x 1 1/2"



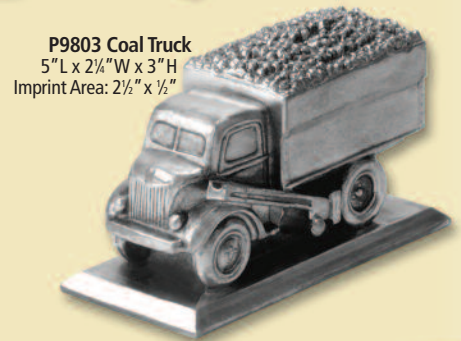
P9819
Coal Truck
 5" L x 2 1/2" W x 3" H
 Imprint Area:
 4 1/2" x 1 1/2"



P9118
Tractor Trailer
 5" L x 1 1/2" W x 2" H



P9457
Waterloo Boy Tractor
 4 1/2" L x 2 3/4" W x 4 1/2" H
 Imprint Area: 3 1/2" x 2 1/2"

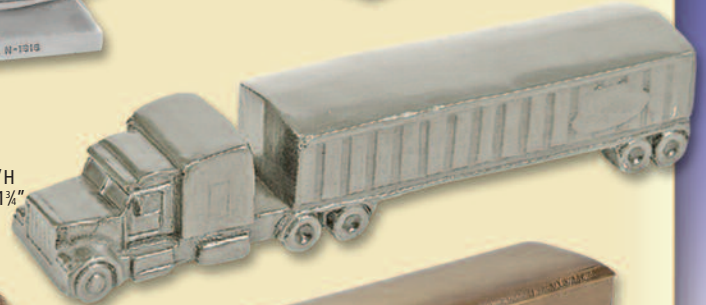


P9803
Coal Truck
 5" L x 2 1/4" W x 3" H
 Imprint Area: 2 1/2" x 1 1/2"



P9815
Tractor Trailer
 5" L x 1 1/4" W x 1 3/4" H

6816
Tractor Trailer
 8 3/4" L x 1 3/4" W x 3" H
 Imprint Area: 5 1/2" x 1 1/4"



P9379
Cargo Van
 4 1/2" L x 2 1/4" W x 2 1/4" H
 Imprint Area: 2 1/2" x 1 1/2"

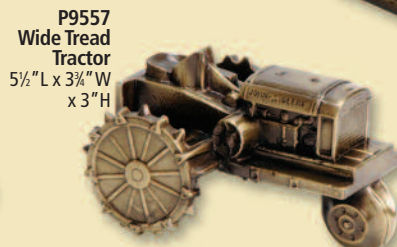
P9034
Garbage Truck
 6 1/2" L x 2 1/2" W x 3" H
 Imprint Area: 2" x 3/4"



P9116
Tractor Trailer
 6 1/4" L x 2" W x 2 1/4" H
 Imprint Area: 4" x 1"



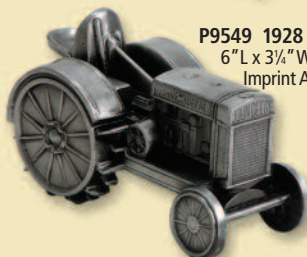
P9517
Tractor
 6 1/2" L x 2 3/4" W x 4 1/2" H
 Imprint Area:
 1 3/4" x 1 1/2"



P9557
Wide Tread Tractor
 5 1/2" L x 3 3/4" W
 x 3" H



P1315
Tractor
 5 1/2" L x 3" W x 3" H
 Imprint Area: 1 1/4" x 1"



P9549
1928 GP Tractor
 6" L x 3 3/4" W x 3 3/4" H
 Imprint Area: 1 1/2" x 1"



P9535
Model D Tractor
 6" L x 3" W x 3" H
 Imprint Area: 1 1/4" x 2"



P9522
Waterloo Tractor
 7" L x 3" W x 4" H
 Imprint Area:
 1 3/4" x 3/4"

Banks - Trucks, etc.

Genuine metal banks, made in the USA.

P9804
Concrete Mixer Truck
5" L x 2" W x 2 1/2" H



P9858
Dump Truck
6" L x 2 1/4" W x 3" H



P9828
GMC Dump Truck
6" L x 2 1/2" W x 2 1/2" H



P9813
GMC Dump Truck
6" L x 2 1/2" W x 2 3/4" H
Imprint Area: 1" x 1"

P9920
Retractable
Dump Truck
6" L x 2 1/2" W x 2 1/4" H



P9833
Dump Truck
5" L x 2" W x 2 1/4" H

P9818 Dump Truck
6 1/4" L x 3" W x 3 1/4" H



P9910 Crane
3" L x 2 1/2" W
x 6 1/4" H

P9005
Dump Truck
6" L x 2 3/4" W
x 3" H



P9395
Dump Truck
6 1/4" L x 2 3/4" W x 3" H

P9334
Dump Truck
6" L x 2 3/4" W
x 2 1/2" H



P9921
Earth Mover
8" L x 2 1/4" W x 5 1/4" H

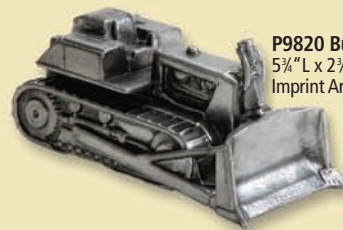
P9185
Dump Truck
6 1/2" L x 2 1/4" W
x 3" H



P9879
Ladder Tow Truck
5 1/2" L x 3 3/4" W x 5 1/2" H



P9820 Bulldozer
5 1/2" L x 2 3/4" W x 2 1/4" H
Imprint Area: 1 1/2" x 1"



P9925
Hook and Ladder Truck
6" L x 2 1/2" W x 5 1/2" H
Imprint Area: 1" x 1"



P9834
Bull Dozer
6 1/4" L x 2 3/4" W x 2 1/2" H



P9016 Steam Roller
5" L x 1 1/2" W x 2 1/2" H



Banks - Miscellaneous Vehicles

Genuine metal banks, made in the USA.

P9428
Popcorn Stand
4½" L x 2¾" W x 5" H
Imprint Area: 2½" x 1"



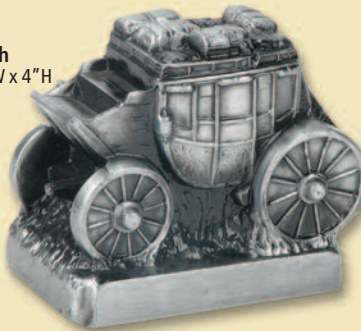
P1060
Covered Wagon
4½" L x 2¾" W x 3¾" H
Imprint Area: 3¾" x ½"



P1140
Conestoga
Covered Wagon
5½" L x 2¾" W x 3½" H
Imprint Area: 1½" x 1¼"



P1103
Stage Coach
4¾" L x 2¾" W x 4" H
Imprint Area:
4" x ½"



P1181
Overland Wagon
Stage Coach
5" L x
2¾" W x 3½" H
Imprint Area:
1¾" x 1½"

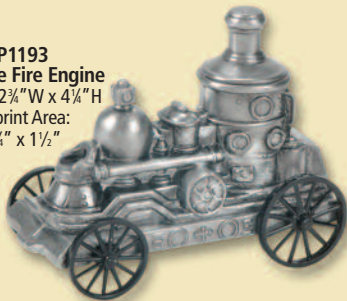


P1217
Popcorn Wagon
4¾" L x 2¾" W x 3¾" H
Imprint Area: 1½" x 1"



P1197
Circus Wagon
5" L x 2¾" W x 3½" H
Imprint Area: 1¼" x 1¼"

P1193
Antique Fire Engine
5¼" L x 2¾" W x 4¼" H
Imprint Area:
1¼" x 1½"



P9525
Antique Fire Steamer
5½" L x 2¾" W x 4¼" H
Imprint Area: 1¾" x ½"



P1114
Speed Boat
7" L x 3" W x 2¼" H
Imprint Area:
1½" x 1¼"



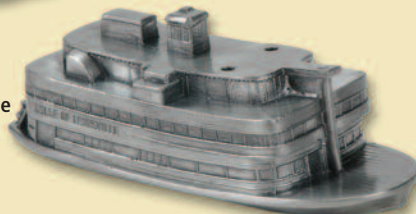
P1195
River Boat
6¾" L x 2½" W x 4" H
Imprint Area: 1½" x 1½"



P9230
Trawler
6" L x 1¾" W x 1½" H
Imprint Area: 4½" x ½"



P9360
Belle of Louisville
River Boat
6¾" L x 2¾" W x 2½" H



P9545
Golf Cart
5¾" L x 2¾" W x 4" H
Imprint Area: 1¼" x 1"



Banks - Trains

Genuine metal banks, made in the USA.

P9418 Trolley
6" L x 2 1/4" W x 2 1/4" H
Imprint Area: 3 1/2" x 1 1/4"



P9507 Trolley
5 1/4" L x 2 1/4" W x 3 1/4" H
Imprint Area: 3" x 1"



P1396 Utility Car
6 1/4" L x 2 1/2" W x 3" H
Imprint Area: 2" x 1"



P1398 Cattle Car
6 1/4" L x 2 1/2" W x 3" H
Imprint Area: 2" x 1"



P9544 Box Car
6 1/4" L x 2 1/2" W x 3" H
Imprint Area: 1 1/4" x 1 1/4"



P1395 Passenger Car
6 1/4" L x 2 1/2" W x 3" H
Imprint Area: 2" x 1"



P1382 Caboose
5 1/4" L x 2 1/2" W x 3 1/4" H
Imprint Area: 3 1/2" x 2"



P1333 Trolley
5 1/2" L x 2 1/4" W x 2 1/4" H
Imprint Area: 3 1/2" x 1"



P9359 Horse Trolley
5 1/4" L x 2 1/2" W x 3" H
Imprint Area: 3 1/4" x 1 1/4"



P1229 Wood Tender
5" L x 2 1/2" W x 2 1/4" H
Imprint Area: 3 1/2" x 3/4"



P9872 Wood Tender
5" L x 2 1/2" W x 2 1/4" H



P1117 The General Locomotive
7" L x 2 1/4" W x 3 1/4" H



P1397 Oil Tanker
6 1/4" L x 2 1/2" W x 3 1/4" H
Imprint Area: 2" x 1"



P9448 Train Tunnel
5 1/2" L x 3 1/4" W x 3 1/2" H



P1119 B&O Locomotive
5 1/4" L x 2 1/2" W x 3 1/4" H
Imprint Area: 1 1/2" x 1 1/4"



P1399 Locomotive
7" L x 2 1/4" W x 3 1/4" H Imprint Area: 1 1/2" x 3/4"



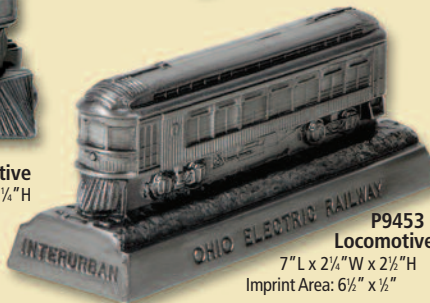
P9468 Train Tunnel
6 1/2" L x 3 1/2" W x 3" H Imprint Area: 3" x 2 1/2"



P9091 Locomotive
7 1/4" L x 2 1/2" W x 2 1/4" H
Imprint Area: 7" x 1 1/4"



P9453 Locomotive
7" L x 2 1/4" W x 2 1/2" H
Imprint Area: 6 1/2" x 1 1/2"



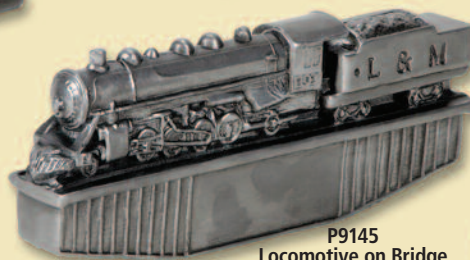
P9019 Locomotive
7" L x 2 1/4" W x 3 1/4" H Imprint Area: 6 1/2" x 1 1/2"



9042 Locomotive
12" L x 2 1/2" W x 4" H



P9145 Locomotive on Bridge
7 1/2" L x 1 1/4" W x 3" H
Imprint Area: 2 1/2" x 1"

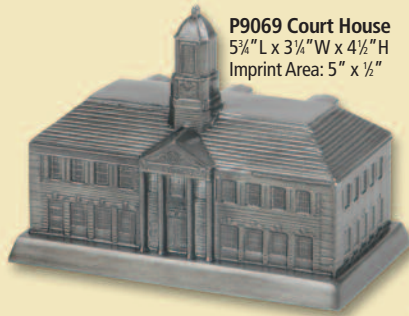


Banks - Buildings

Genuine metal banks, made in the USA.



P9500 Skyscraper
3 1/4" W x 7" H
Imprint Area: 4" x 1 1/2"



P9069 Court House
5 3/4" L x 3 1/4" W x 4 1/2" H
Imprint Area: 5" x 1 1/2"



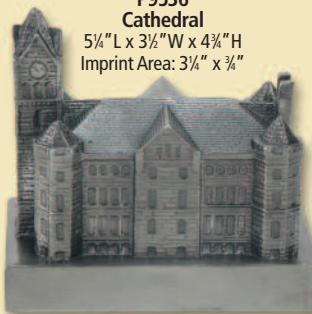
P9518 Hotel/Inn
5 3/4" L x 3 1/2" W x 4 1/4" H
Imprint Area: 5 1/2" x 1 1/2"



P9511 Old Court House
4 1/2" W x 6" H
Imprint Area: 2" x 1 1/4"



P9543 Clock Tower
3 1/2" W x 7 3/4" H
Imprint Area: 3 1/2" x 2 1/2"



P9536 Cathedral
5 1/4" L x 3 3/4" W x 4 3/4" H
Imprint Area: 3 1/4" x 3/4"



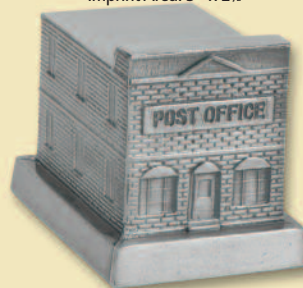
P9301 Court House
6 1/4" L x 3 3/4" W x 6" H
Imprint Area: 6" x 1 1/2"



P9515 Credit Union
4 1/2" L x 3 1/4" W x 3 1/2" H
Imprint Area: 3" x 2 1/2"



P9516 General Building
4 1/2" L x 3 1/4" W x 3 1/2" H
Imprint Area: 2 1/2" x 1" or 3" x 2 1/2"



P9513 Post Office
4 1/2" L x 3 1/4" W x 3 1/2" H
Imprint Area: 3" x 2 1/2"



P9514 Bank Bldg.
4 1/2" L x 3 1/4" W x 3 1/2" H
Imprint Area: 3" x 2 1/2"



P9567 Church W/Steeple
5 1/4" L x 2 3/4" W x 5 1/4" H
Imprint Area: 2 3/4" x 1 1/2"



P9528 School House
4 1/4" L x 3" W x 4 1/4" H
Imprint Area: 2 1/2" x 1 1/2"



P9529 Church
4 1/4" L x 3" W x 4 1/4" H
Imprint Area: 2 1/2" x 1 1/2"



P546 Old Town Bank Bldg.
4 3/4" L x 4 1/2" W x 4 1/4" H Imprint Area: 2 3/4" x 2 1/2"

Banks - Animals

Genuine metal banks, made in the USA.



P1095 Piggy Bank
4" L x
3 1/2" W x 3 1/2" H
Imprint Area:
2" x 1 1/2"



P1255 Filmore Pig
5 1/4" L x
2 1/2" W x 3 1/2" H
Imprint Area: 2" x 1 1/4"



P1088 Jolly Pig
5 1/4" L x 2 1/2" W x 3 1/4" H Imprint Area: 2" x 1 1/4"



P1036 Blubber Boy Piggy Bank
5" L x 3" W
x 3 1/4" H

Imprint Area:
1 1/2" x 1"



P1016 Piggy Bank
4 1/4" L x 3" W
x 3 1/2" H
Imprint Area:
1 1/2" x 1"



P9330 Lion
4 3/4" L x 6" H
Imprint Area:
3" x 3/4"



P1185 Wild Cat
7" L x 2 1/2" W x 5" H

P9482 Pig
4 1/2" L x 2 1/4" W
x 3 1/2" H
Imprint Area:
3 1/2" x 3/4"



582 Three Little Pigs
3 1/2" W x 5 1/4" H
Imprint Area: 1" x 1/2"



P1139 Sitting Dog
3 1/4" W x 4" H
Imprint Area: 1" x 1 1/2"



P1329 Basset Hound
6" L x 4" W x 2 1/4" H



P1325 Schnauzer
6" W x 5" L
Imprint Area: 1" x 1/2"



P1357 Teddy Bear
5 1/4" H x 3 1/2" W
Imprint Area: 3" x 1/2"



P9149 Elephant 7" L x 6" H
Imprint Area: 4 1/2" x 1/2"



P9216 Show Dog
4 1/4" L x 2 1/2" W x 5" H
Imprint Area:
3 1/2" x 1/2"

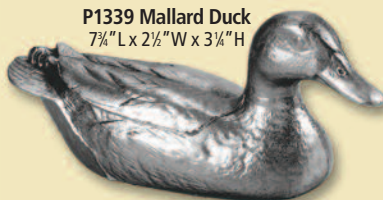


P1162 Cat
5" L x 3 1/4" W
x 5 1/2" H

P1191 Ram
7" H x 4 1/2" W



7094 Teddy Bear
3" W x 4" H



P1339 Mallard Duck
7 3/4" L x 2 1/2" W x 3 1/4" H



P9370 Standing Buffalo
5" L x 2 1/4" W x 4" H Imprint Area: 5" x 1/4"

P9023 Fish
5 1/2" L x 7" H
Imprint Area: 2 3/4" x 3/4"



Banks - Miscellaneous

Genuine metal banks, made in the USA.

P1259
Pot Belly
Stove
5½" H x 3½" W
Imprint Area:
1½" x 1¼"



P1271
Coffee Grinder
5¼" H x 3¼" W
Imprint Area:
1½" x 1¼"



P1303 Robot
6¼" H x 3¼" W
Imprint Area:
1½" x 2¼"



P9469 Antique Telephone
6¼" H x 3¼" W
Imprint Area:
2½" x 2¼"



P9471
Antique Telephone
5¼" H x 4" W
Imprint Area: 2" x 2½"



P9553
Safe
5" H x 4" W



P9215
Tree of Life
4½" H x 4½" L
Imprint Area:
3½" x ¾"



P9358
Speed Queen Washer
5¼" H x 3" W
Imprint Area:
1½" x 1½"



P9475
Cash Register
5¼" H x 3¼" L
Imprint Area:
3" x ½"



P9871
Furniture
Cabinet
5¼" H x 3¼" W
Imprint Area:
1½" x 2¼"



P1260
Antique Stove
4¼" H x 5¼" W
Imprint Area: 2" x 1½"



P1069
Beehive
3¼" H x 3¼" W
Imprint Area:
3½" x ½"



P1131
Barrel
3¾" H x 4" W
Imprint Area:
1½" x 1½"



P9564
Electric
Motor
3½" H x
5½" W
Imprint
Area:
1" x 1"



P9459
Electric Motor
3¾" H x 5" W
Imprint Area:
3¾" x ½"



P1393
Money Safe
4¾" H x 3¼" W
Imprint Area:
2½" x 2"



P9445 Treasure Chest
3¾" H x 5¼" W Imprint Area: 1¼" x 1¼"



Giftware

Desk Accessories - Bookends
Paperweights - Mortars & Pestles - Cowboy Boots, etc.

- **Made in the USA**
- **Molded metal (stand alone or mounted on bases made of other materials)**
- **We can imprint most of our stock pieces or mount them on a base that can be printed**
 - **Stock items can be modified to suit your custom needs**
 - **Fully custom designed products available**
 - **Firm quotes**
- **Pre-production proofs**

actually, all of the items we manufacture are considered to be “gifts.” Pieces that we mainly classify as “gifts” are featured in this section.

We also produce a large number of custom gift items every year for a variety of clients. All design work and production is done at our factory here in the United States. For custom designs, our designers work from photos, drawings, your idea, a description of what you want, or we can work from your existing design. A basic art layout is prepared for your review. After you and our staff agree on a final design and product specifications, we prepare a final art proof if needed and quote your project. If you decide to go ahead with the project, we will then produce a pre-production proof model for your approval prior to final production.

Your piece can be provided with a felt bottom or mounted on wood, marble, high quality plastic or other special material bases. Various methods of imprinting are available, including molding in the metal, pad printing, attaching etched or silk-screened plates or attaching any of a wide variety of custom or stock medallions.

For custom designs, design and tooling charges can range from hundreds of dollars to thousands. Production time for custom pieces can take anywhere from one to three months.

The examples below and on the following pages are just a few of the many stock and custom gift pieces we have created.



7727 Cowboy Boot
With Spur
7 3/4" L x 7 3/8" H



677 Cowboy Boot
With Spur
9 3/4" L x 9 1/2" H



7712 Cowboy Boot
With Spur
9 3/4" L x 9" H



7730
Cowboy Boot
With Spur
6 1/4" L x 6 3/8" H



7709 Owl
5 1/4" W x 7" H



7710
Flower
Vase
4 1/4" W
x 6" H



7689
Matches Vase
3 3/4" W x 4 1/2" H

Giftware - Desk Accessories

Genuine metal desk accessories, made in the USA.



355-M Eagle Pen Holder
2½" W x 6" L x 8½" H
(Includes Pen)
(#355 is 2¼" H)

313 Cowboy Clock
6" W x 6¼" H

A2024 Antique Clock
5½" W x 11½" H

6546 Ribbed Clock
3" W x 4" H

9281 Pen Holder
3¼" Dia. x 8" H
(Includes Pen)

8903 Pen Holder
3¼" W x 6¼" L x 8" H
(Includes Pen)

6454 Horse Shoe Pen Holder
4¾" W x 4¾" L x 9" H
(Includes Pen)

9103-M Bull/Bear Pen Holder
2½" W x 6" L x 8½" H
(Includes Pen)

P9040 Crane Paperclip Holder
3" W x 2¾" H



7272 Coin Holder
6½" L x 2" H

9269 Triangle Logo Paper Weight

6603 Military Letter Opener
½" W x 7" L
(Other Disks Available)

692 Lady Justice Letter Opener
1½" W x 6½" L



7455 Coin Holder
5¼" L x 1¼" H

8904-C149 Golfer Pen Holder
3" W x 9¾" L x 7¼" H
(Includes Pen)

6585 Airplane Clock 2" W x 6½" L x 2" H



7463-B Military Disk Letter Holder
4" W x 4" H
(Other Disks Available)



9600-M Marine Corps Paper Weight
4" W x 5½" H

7018 Eagle Business Card Holder
3¾" W x 11¼" H
(Includes Flag)



6803-PH Lincoln Coin Pen Holder
3¾" H x 3½" W
(Includes Pen)



6803 Lincoln Coin Paper Weight
3¾" H x 3½" W



7463 Letter Holder
4" W x 4" H



7786-9600 Pen Holder
4½" Dia x 8½" H
(Includes Pen)



7766-B Coin Holder
5¼" W x 8¼" L x 1¼" H

Giftware - Desk Accessories

Genuine metal desk accessories, made in the USA.

C127B-MBCH
Eagle Business
Card Holder
Metal/Marble
5 1/4" H x 4 1/4" L x 2 1/2" D



C127B-BCH
Eagle Business
Card Holder
Metal
5 1/4" H x 4 1/4" L x 2 3/8" D



C127A-MBCH
Eagle Business
Card Holder
Metal/Marble
5 1/4" H x 4 1/4" L x 2 1/2" D



C127A-BCH
Eagle Business
Card Holder
Metal
5 1/4" H x 4 1/4" L x 2 3/8" D



C127B-MPH
Eagle Memo
Pad Holder
Metal
4" H x 4" L



C127A-MPH
Eagle Memo
Pad Holder
Metal
4" H x 4" L



M11-MBCH
Eagle Business
Card Holder
Metal/Marble
5 1/4" H x 4 1/4" L x 2 1/2" D



M11-MPH
Eagle Memo
Pad Holder
Metal
4 1/4" H x 4" L



M11-BCH
Eagle Business
Card Holder
Metal
5 1/4" H x 4 1/4" L x 2 3/8" D



9095-MBCH
Eagle Business
Card Holder
Metal/Marble
6 1/4" H x 4 1/4" L x 2 1/2" D



9095-BCH
Eagle Business
Card Holder
Metal
6 1/4" H x 4 1/4" L x 2 3/8" D



P9854-MBCH
Eagle Business
Card Holder
Metal/Marble
6" H x 4 1/4" L x 2 1/2" D



P9854-BCH
Eagle Business
Card Holder
Metal
6" H x 4 1/4" L x 2 3/8" D



9095-MPH
Eagle Memo
Pad Holder
Metal
5" H x 4" L



P9854-MPH
Eagle Memo
Pad Holder
Metal
4 1/4" H x 4" L



7415-MBCH
Eagle Business
Card Holder
Metal/Marble
6 3/4" H x 4 1/4" L x 2 1/2" D



7415-BCH
Eagle Business
Card Holder
Metal
6 3/4" H x 4 1/4" L x 2 3/8" D



Giftware - Desk Accessories

Genuine metal desk accessories, made in the USA.



347-MBCH
Eagle Business
Card Holder
Metal/Marble
5½"H x 4¼"L x 2½"D



347-BCH
Eagle Business Card Holder
Metal
5¼"H x 4¼"L x 2¾"D



355-MBCH
Eagle Business
Card Holder
Metal/Marble
5¾"H x 4¼"L x 2½"D



355-BCH
Eagle Business
Card Holder
Metal
5¾"H x 4¼"L x 2¾"D



347-MPH
Eagle Memo
Pad Holder
Metal
4"H x 4"L



6586-BCH
Eagle Business Card Holder
Metal
4¼"H x 4¼"L x 2¾"D



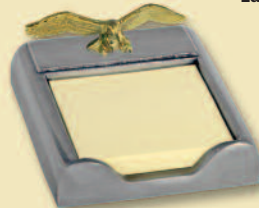
355-MPH
Eagle Memo Pad Holder
Metal
3½"H x 4"L



C226-MBCH
Eagle Business Card Holder
Metal/Marble
6½"H x 4¼"L x 2½"D



C226-BCH
Eagle Business
Card Holder
Metal
6½"H x 4¼"L x 2½"D



6586-MPH
Eagle Memo Pad Holder
Metal
5"H x 4"L



348-BCH
Eagle Business
Card Holder
Metal
4¼"H x 4¼"L x 2¾"D



C421-MBCH
Eagle Business
Card Holder
Metal/Marble
5¼"H x 4¼"L x 2½"D



C421-BCH
Eagle Business
Card Holder
Metal
5¼"H x 4¼"L x
2¾"D



348-MBCH
Eagle Business Card Holder
Metal/Marble
4¼"H x 4¼"L x 2½"D



348-MPH
Eagle Memo Pad Holder
3¾"W x 4"L



C421-MPH
Eagle Memo
Pad Holder
Metal
4"H x 4"L



C392-BCH
Eagle Business
Card Holder
Metal
4¾"H x 4¼"L x 2¾"D



7018-MBCH
Eagle Business
Card Holder
Metal/Marble
5½"H x 4¼"L x 2½"D



7018-BCH
Eagle Business Card
Holder
Metal
5½"H x 4¼"L x 2¾"D



C392-MBCH
Eagle Business Card
Holder
Metal/Marble
4¾"H x 4¼"L x 2½"D



C392-MPH
Eagle Memo Pad Holder
Metal
3½"H x 4"L



7018-MPH
Eagle Memo
Pad Holder
Metal
4¼"H x 4"L

Giftware - Desk Accessories

Genuine metal desk accessories, made in the USA.



120-MBCH
Horse Business
Card Holder
Metal/Marble
6" H x 4 1/4" L x 2 3/8" D



120-BCH
Horse Business
Card Holder
Metal
5 3/4" H x 4 1/4" L
x 2 3/8" D



121-MBCH
Horse Business
Card Holder
Metal/Marble
6 1/2" H x 4 1/4" L
x 2 3/8" D



121-BCH
Horse Business
Card Holder
Metal
7" H x 4 1/4" L
x 2 3/8" D

C152B-BCH
Wolf Business
Card Holder



Metal
7" H x 4 1/4" L
x 2 3/8" D



120-MPH
Horse Memo
Pad Holder
Metal
4 1/2" H x 4" L



9103-BCH
Bull Business
Card Holder

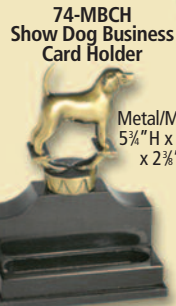
Metal
4" H x 4 1/4" L
x 2 3/8" D



121-MPH
Horse Memo
Pad Holder
Metal
5" H x 4" L



C152B-MPH
Wolf Memo
Pad Holder
Metal
5 3/4" H x 4" L



74-MBCH
Show Dog Business
Card Holder

Metal/Marble
5 3/4" H x 4 1/4" L
x 2 3/8" D



9103-MPH
Bull Memo Pad Holder
Metal
2 3/4" H x 4" L



74-MPH
Show Dog
Memo Pad Holder



171-MPH
Buck/Deer Memo
Pad Holder
Metal 6 1/2" H x 4" L

7188-MPH
Bird Memo
Pad Holder
Metal
2 1/2" H x 4" L



7188-BCH
Bird Business
Card Holder

Metal
3 3/4" H x
4 1/4" L x
2 3/8" D



74-MBCH
Show Dog
Memo Pad Holder



74-BCH
Show Dog
Business Card
Holder
Metal 5 1/2" H x
4 1/4" L x 2 3/8" D



74-MPH
Show Dog
Memo Pad Holder



171-BCH
Buck/Deer
Business
Card Holder

Metal
7 1/2" H x
4 1/4" L x
2 3/8" D



171-MBCH
Buck/Deer Business
Card Holder
Metal/Marble
7 3/4" H x 4 1/4" L x 2 3/8" D



7658-MBCH
Owl Business
Card Holder
Metal/
Marble



7658-MPH
Owl Memo Pad
Holder
Metal
3 3/4" H
x 4" L



7658-BCH
Owl Business
Card Holder
Metal



9104-MPH
Bear Memo Pad
Holder

Metal
2 3/4" H x 4" L



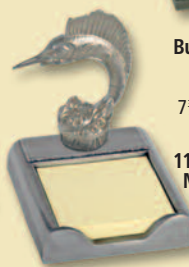
9104-BCH
Bear Business
Card Holder
Metal

Metal 4" H x 4" L



119-BCH
Marlin Business
Card Holder
Metal

6 1/2" H x
4 1/4" L x
2 3/8" D



119-MPH
Marlin Memo
Pad Holder
Metal
5 1/4" H x 4" L



207-MBCH
Trout Business
Card Holder



207-MPH
Trout Memo
Pad Holder
Metal
5 1/4" H x 4" L



207-BCH
Trout Business
Card Holder
Metal



206-MBCH
Bass Business
Card Holder
Metal/
Marble
6" H x
4 1/4" L
x 2 3/8" D



206-BCH
Bass Business
Card Holder
Metal

5 3/4" H x
4 1/4" L x
2 3/8" D

206-MPH
Bass Memo
Pad Holder
Metal
4 1/2" H x 4" L

77-MBCH
Bass Business
Card Holder
Metal/
Marble
5 1/2" H x 4 1/4" L
x 2 3/8" D



77-MPH
Bass Memo
Pad Holder

Metal
4" H x 4" L



77-BCH
Bass Business
Card Holder
Metal
5 1/4" H x 4 1/4" L
x 2 3/8" D

Giftware - Desk Accessories

Genuine metal desk accessories, made in the USA.



9070-MBCH
Washington Monument
Business Card Holder
Metal/Marble
5½" H x 4¼" L x 2¾" D



9070-MPH
Washington Monument
Memo Pad Holder
Metal
4" H x 4" L



9056-MBCH
Lighthouse
Business Card Holder
Metal/Marble
6" H x 4¼" L x 2¾" D



9056-MPH
Lighthouse
Memo Pad Holder
Metal
4½" H x 4" L



325-MBCH
Empire State Building
Business Card Holder
5" H x 4¼" L x 2¾" D



325-BCH
Empire State Building
Business Card Holder
Metal
5½" H x 4¼" L x 2¾" D



6804-MPH
Transamerica Building
Memo Pad Holder
Metal
6¼" H x 4" L



325-MPH
Empire State Building
Memo Pad Holder
Metal
4¼" H x 4" L



6804-BCH
Transamerica Building
Business Card Holder
Metal
7" H x 4¼" L x 2¾" D



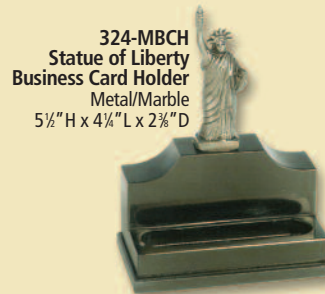
324-BCH
Statue of Liberty
Business Card Holder
Metal
5¼" H x 4¼" L x 2¾" D



6809-MPH
St Louis Arch
Memo Pad Holder
Metal
4½" H x 4" L



6809-BCH
St Louis Arch
Business Card Holder
Metal
5" H x 4¼" L x 2¾" D



324-MBCH
Statue of Liberty
Business Card Holder
Metal/Marble
5½" H x 4¼" L x 2¾" D



324-MPH
Statue of Liberty
Memo Pad Holder
Metal
4" H x 4" L

Giftware - Desk Accessories

Genuine metal desk accessories, made in the USA.



72-MBCH
Olympic Figure
Business Card
Holder
Metal/Marble
8" H x 4 1/4" L x 2 3/8" D



72-MPH
Olympic Figure
Memo Pad Holder
Metal
6 1/2" H x 4" L



124-MBCH
Dart Business Card Holder
Metal/Marble
5 1/2" H x 4 1/4" L x 2 3/8" D



124-MPH
Dart Memo Pad
Holder
Metal
4" H x 4" L



124-BCH
Dart Business Card Holder
Metal
5" H x 4 1/4" L x 2 3/8" D



72-BCH
Olympic Figure
Business Card
Holder
Metal
7 3/4" H x 4 1/4" L
x 2 3/8" D



6585-MPH
Airplane Clock
Memo Pad Holder
Metal 3" H x 4" L



6832-BCH
Football Business
Card Holder
Metal
5 1/2" H x 4 1/4" L x
2 3/8" D



6832-MPH
Football Memo
Pad Holder
Metal
3 1/2" H x 4" L



9100-MBCH
Bowling Pin Business
Card Holder
Metal/Marble
5 1/4" H x 4 1/4" L x 2 3/8" D



9100-BCH
Bowling Pin Business
Card Holder
Metal
5" H x 4 1/4" L x 2 3/8" D



9101-BCH
Bowling Pin
Business Card
Holder
Metal
4 3/4" H x 4 1/4" L x 2 3/8" D



9101-MBCH
Bowling Pin Business
Card Holder
Metal/Marble
5" H x 4 1/4" L
x 2 3/8" D



9100-MPH
Bowling Pin
Memo Pad
Holder
Metal
3 3/4" H x 4" L



7888-MBCH
Golf Ball Business Card Holder
Metal/Marble
4 1/4" H x 4 1/4" L x 2 3/8" D



9101-MPH
Bowling Pin
Memo Pad
Holder
Metal
3 1/2" H x 4" L



7888-MPH
Golf Ball Memo
Pad Holder
Metal
2 1/4" H x 4" L



7888-BCH
Golf Ball Business Card Holder
Metal
4" H x 4 1/4" L x 2 3/8" D

Giftware - Desk Accessories

Genuine metal desk accessories, made in the USA.

M6-MBCH
Women's Tennis
Business Card Holder
Metal/Marble
5 1/2" H x 4" L x 2 1/2" D



M6-BCH
Women's Tennis
Business Card Holder
Metal
5 1/2" H x 4" L x 2 3/8" D



9094-MBCH
Female Golfer Business
Card Holder
Metal/Marble
7 1/4" H x 4 1/4" L x 2 3/8" D



9094-BCH
Female Golfer
Business
Card Holder
Metal
7" H x 4 1/4" L x 2 3/8" D



M6-MPH
Women's Tennis
Memo Pad Holder
Metal
4" H x 4" L



9094-MPH
Female Golfer
Memo Pad Holder
Metal
5 1/2" H x 4" L



191-MBCH
Golf Hack
Business Card
Holder
Metal/Marble
7 1/2" H x 4 1/4" L
x 2 3/8" D



C378-BCH
Male Golfer Business
Card Holder
Metal
7 1/4" H x 4 1/4" L
x 2 3/8" D



C378-MBCH
Male Golfer
Business Card Holder
Metal/Marble
7 1/4" H x 4 1/4" L
x 2 3/8" D



188-BCH
Female Archer
Business Card
Holder
Metal
6" H x 4 1/4" L
x 2 3/8" D



191-BCH
Golf Hack
Business Card Holder
Metal
7 1/4" H x 4 1/4" L
x 2 3/8" D



188-MPH
Female Archer
Memo Pad Holder
Metal
4 3/4" H x 4" L



C378-MPH
Male Golfer
Memo Pad
Holder
Metal
6" H x 4" L



117-MPH
Female Table
Tennis Memo
Pad Holder
Metal
6 1/4" H x 4" L



117-BCH
Female Table
Tennis Business
Card Holder
Metal
7 1/2" H x 4 1/4" L
x 2 3/8" D



M5-MPH
Men's Gymnastics
Memo Pad Holder
Metal
4 1/2" H x 4" L



M5-MBCH
Men's Gymnastics
Business Card Holder
Metal/Marble
5 1/4" H x 4 1/4" L
x 2 3/8" D



M5-BCH
Men's Gymnastics
Business Card Holder
Metal
5 1/4" H x 4 1/4" L x 2 3/8" D



Giftware - Desk Accessories

Genuine metal desk accessories, made in the USA.



6834-MBCH
Boxer Business Card Holder
Metal/Marble
6½" H x 4¼" L x 2¾" D



6834-MPH
Boxer Memo Pad Holder
Metal
5" H x 4" L



6835-MBCH
Classic Football Player
Business Card Holder
Metal/Marble
6½" H x 4¼" L x 2¾" D



6835-BCH
Classic Football Player
Business Card Holder
Metal
6¼" H x 4¼" L x 2¾" D

6834-BCH
Boxer Business
Card Holder
Metal
6½" H x 4¼" L
x 2¾" D



C227-MBCH
Skateboarder Business Card Holder
Metal/Marble
6½" H x 4¼" L x 2¾" D



C227-BCH
Skateboarder
Business Card Holder
Metal
6½" H x 4¼" L x 2¾" D



6835-MPH
Classic Football Player
Memo Pad Holder
Metal 5" H x 4" L

M3-MPH
Runner Memo Pad Holder
Metal
3½" H x 4" L



C227-MPH
Skateboarder
Memo Pad Holder
Metal 5½" H x 4" L



105-MBCH
Victory Business
Card Holder
Metal/Marble
8" H x 4¼" L x 2¾" D



105-BCH
Victory Business
Card Holder
Metal
7¾" H x 4¼" L
x 2¾" D



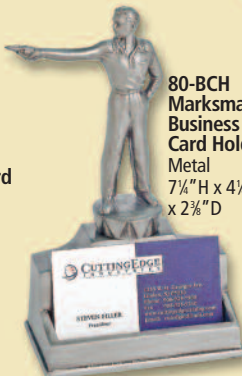
M3-BCH
Runner Business
Card Holder
Metal
4¾" H x 4¼" L x 2¾" D



105-MPH
Victory Memo
Pad Holder
Metal
6½" H x 4" L



80-MBCH
Marksman
Business Card
Holder
Metal/Marble
7¼" H x 4¼" L
x 2¾" D



80-BCH
Marksman
Business
Card Holder
Metal
7¼" H x 4¼" L
x 2¾" D



80-MPH
Marksman
Memo Pad
Holder
Metal
5¾" H x 4" L



209-MPH
Rifleman
Memo Pad
Holder
Metal
6" H x 4" L

Giftware - Desk Accessories

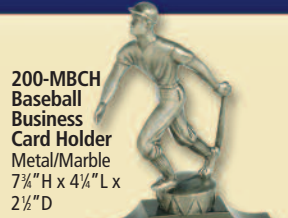
Genuine metal desk accessories, made in the USA.



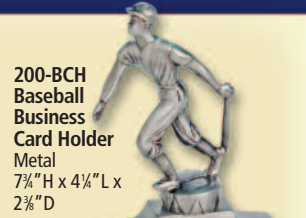
M2-MBCH
Wrestler Business
Card Holder
Metal/Marble
5 3/4" H x 4 1/4" L x 2 1/2" D



M2-BCH Wrestler Business
Card Holder
Metal
5 3/4" H x 4 1/4" L x 2 3/8" D



200-MBCH
Baseball
Business
Card Holder
Metal/Marble
7 3/4" H x 4 1/4" L x
2 1/2" D



200-BCH
Baseball
Business
Card Holder
Metal
7 3/4" H x 4 1/4" L x
2 3/8" D



M2-MPH
Wrestler Memo
Pad Holder
Metal
3 1/2" H x 4" L



M15-BCH
Men's Basketball
Business Card
Holder
5 3/4" H x 4 1/4" L x 2 3/8" D



200-MBCH
Baseball
Memo Pad
Holder
Metal
6 1/2" H x 4" L



M13-MPH
Women's
Diving Memo
Pad Holder
Metal
3 1/2" H x 4" L



M13-BCH
Women's
Diving Business
Card Holder
Metal
5 3/4" H x 4 1/4" L x
2 3/8" D



103-BCH
Women's Diving
Business Card
Holder
Metal/Marble
6 1/2" H x 4 1/4" L x
2 1/2" D



103-MBCH
Women's Diving
Business Card
Holder
Metal
6 1/2" H x 4 1/4" L x
2 3/8" D



M14-MBCH
Men's Diving
Business Card
Holder
4 3/4" H x 4 1/4" L x 2 3/8" D



M14-BCH
Men's Diver
Business Card
Holder
Metal
4 3/4" H x 4 1/4" L x
2 3/8" D



103-MPH
Women's Diving
Memo Pad Holder
Metal
5 1/4" H x 4" L



M8-MBCH
Water Polo Business
Card Holder
Metal/Marble
3 1/2" H x 4 1/4" L x 2 1/2" D



M8-BCH Water Polo
Business Card Holder
Metal
3 1/2" H x 4 1/4" L x 2 3/8" D



M8-MPH
Water Polo
Memo Pad Holder
Metal
2 1/4" H x 4" L

Giftware - Desk Accessories

Genuine metal desk accessories, made in the USA.



78-MBCH
Go Kart Business Card Holder
Metal/Marble
5 1/2" H x 4 1/4" L x 2 3/8" D



78-MPH
Go Kart Memo Pad Holder
Metal 4" H x 4" L



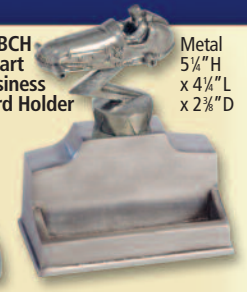
78-BCH
Go Kart Business Card Holder
Metal
5 1/2" H x 4 1/4" L x 2 3/8" D



208-MBCH
Go Kart Business Card Holder
Metal/Marble
5 1/2" H x 4 1/4" L x 2 3/8" D



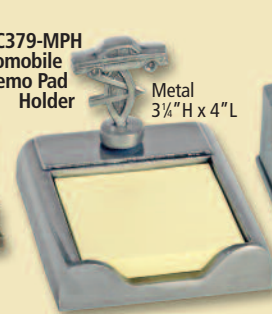
208-MPH
Go Kart Memo Pad Holder
Metal 4" H x 4" L



208-BCH
Go Kart Business Card Holder
Metal
5 1/2" H x 4 1/4" L x 2 3/8" D



C379-MBCH
Automobile Business Card Holder
Metal/Marble
4 3/4" H x 4 1/4" L x 2 3/8" D



C379-MPH
Automobile Memo Pad Holder
Metal
3 1/4" H x 4" L



C379-BCH
Automobile Business Card Holder
Metal
4 1/2" H x 4 1/4" L x 2 3/8" D



9106-MBCH
Antique Auto Business Card Holder
Metal/Marble
4 3/4" H x 4 1/4" L x 2 3/8" D



9106-MPH
Antique Auto Memo Pad Holder
Metal
3 1/4" H x 4" L



9106-BCH
Antique Car Business Card Holder
Metal
4 3/4" H x 4 1/4" L x 2 3/8" D



57-MBCH
Antique Auto Business Card Holder
Metal/Marble 3 3/4" H x 4 1/4" L x 2 3/8" D



57-MPH
Antique Auto Memo Pad Holder
Metal 2 3/4" H x 4" L



57-BCH
Antique Auto Business Card Holder
Metal 4" H x 4 1/4" L x 2 3/8" D



6833-MPH
Antique Auto Memo Pad Holder
Metal
3 1/4" H x 4" L



6833-MBCH
Antique Auto Business Card Holder
Metal/Marble
4 3/4" H x 4 1/4" L x 2 3/8" D



6833-BCH
Antique Auto Business Card Holder
Metal
4 3/4" H x 4 1/4" L x 2 3/8" D



9059-MBCH
Sailboat Business Card Holder
Metal/Marble
6" H x 4 1/4" L x 2 3/8" D



9059-MPH
Sailboat Memo Pad Holder
Metal
4 1/2" H x 4" L



9059-BCH
Sailboat Business Card Holder
Metal
5 3/4" H x 4 1/4" L x 2 3/8" D



95-MBCH
Airplane Business Card Holder
Metal/Marble
5 1/2" H x 4 1/4" L x 2 3/8" D



95-MPH
Airplane Memo Pad Holder
Metal 3 3/4" H x 4" L



95-BCH
Airplane Business Card Holder
Metal
5" H x 4 1/4" L x 2 3/8" D



56B-MPH
Speed Boat Memo Pad Holder
Metal
3 1/2" H x 4" L



56B-BCH
Speed Boat Business Card Holder
Metal
4 3/4" H x 4 1/4" L x 2 3/8" D



115-MBCH
Fishing Boat Business Card Holder
Metal/Marble
4 3/4" H x 4 1/4" L x 2 3/8" D



115-MPH
Fishing Boat Memo Pad Holder
Metal
3 1/4" H x 4" L



115-BCH
Fishing Boat Business Card Holder
Metal
4 1/2" H x 4 1/4" L x 2 3/8" D

Giftware - Desk Accessories

Genuine metal desk accessories, made in the USA.



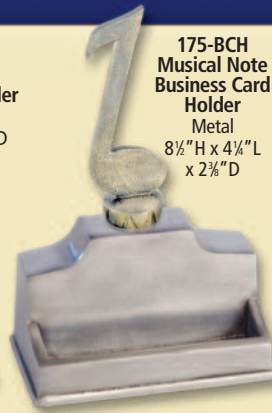
C297-MBCH
Caduceus Symbol
Business Card
Holder
Metal/Marble
8 3/4" H x 4 1/4" L x 2 3/8" D



C297-BCH
Caduceus Symbol
Business Card
Holder
Metal
8 3/8" H x 4 1/4" L x 2 3/8" D



175-MBCH
Musical Note
Business Card Holder
Metal/Marble
8 3/4" H x 4 1/4" L x 2 3/8" D



175-BCH
Musical Note
Business Card
Holder
Metal
8 3/8" H x 4 1/4" L
x 2 3/8" D



175-MPH
Musical Note
Memo Pad Holder
Metal
6 1/4" H x 4" L



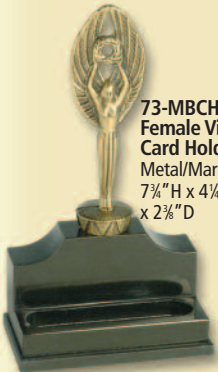
C297-MPH
Caduceus Symbol
Memo Pad Holder
Metal
6 1/4" H x 4" L



655-MPH
Crucifix Memo Pad Holder
Metal
3 1/2" H x 4" L



655-BCH
Crucifix Business Card Holder
Metal
4" H x 4 1/4" L x 2 3/8" D



73-MBCH
Female Victory Business
Card Holder
Metal/Marble
7 3/4" H x 4 1/4" L
x 2 3/8" D



73-BCH
Female Victory
Business Card
Holder
Metal
7 1/2" H x 4 1/4" L
x 2 3/8" D



155-MBCH
Female Victory
Business Card
Holder
Metal/Marble
7" H x 4 1/4" L
x 2 3/8" D



155-BCH
Female Victory
Metal
4 1/2" H
Card Holder
3 1/4" W x 4" L



73-MPH
Female Victory
Memo Pad
Holder
Metal
6 1/4" H x 4" L



8023-BCH
LOVE Business
Card Holder
Metal
6" H x 4 1/4" L x
2 3/8" D



8023-MPH
LOVE Memo
Pad Holder
Metal
4" H x 4" L



155-MPH
Female Victory
Memo Pad Holder
Metal
5 1/2" H x 4" L



692-BCH
Lady of Justice
Business Card
Holder
Metal
5 1/4" H x 4 1/4" L x 2 3/8" D



692-MPH
Lady of Justice
Memo Pad Holder
Metal 4" H x 4" L

172-MBCH
Star of David
Business Card Holder
Metal/Marble
6 1/4" H x 4 1/4" L x 2 3/8" D



172-BCH
Star of David
Business Card
Holder
Metal
6" H x 4 1/4" L
x 2 3/8" D



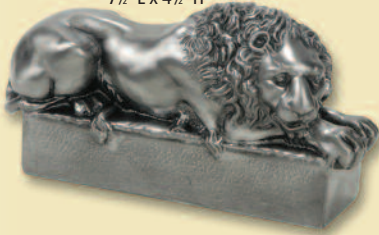
172-MPH
Star of David
Memo Pad
Holder
Metal
4 3/8" H x 4" L



Gifts - Bookends

Genuine metal bookends, made in the USA.

7273
Lion
7½" L x 4½" H



7274
Lion
7½" L x 4½" H



621
Sitting Lion
7¾" L x 6" H



7530 Obelisk
6" L x 4¾" W



7564 Liberty Bell
6" W x 6¼" H



7603 Liberty Bell
4¼" W x 4¾" H



7572 Liberty Bell
5¼" W x 5½" H



7600 Liberty Bell
6" W x 6¼" H



618 Scroll
3¾" W x 5¾" H



7593 Sailboat
4" W x 6" H



6604
Golf Ball Library
4" W x 5¾" H



7276
The Thinker
4¼" W x 7" H



6831 NASA
Space Shuttle
5" W x 8" H

7590
Dolphin
5½" W x 7½" H



7088 Fish
4¼" W x 6" H



7747
Shell
4¾" W x 4¾" H

610 Sailboat
6" W x 7½" H



612 Swordfish
6" W x 7¼" H



Gifts - Bookends

Genuine metal bookends, made in the USA.

7594 Squirrel
4 3/4" W x 7 3/4" H



7586 Paul Revere
5 1/2" W x 7 1/2" H



6170 Locomotive
5 1/4" W x 6 1/2" H



6169
Antique Car
5 1/2" W x 6" H



7633 Cat
4 1/4" W x 7 1/2" H



7074 Horse Head
4 1/2" W x 5 3/4" H



7665 Duck Head
3 3/4" W x 5 3/4" H



7636 Duck
5 3/4" W x 7" H



7666 Duck Head
3 3/4" W x 5 3/4" H



7637 Frog
5" W x 6 3/4" H



C453-79
Fireman On Base
6 1/4" W x 6 3/4" H
(Figure #79)



6605
1890 Silver Dollar
5 1/2" W x 6 1/2" H



7621 Bear
5 1/2" W x 7 1/2" H



7629 Bull
5 3/4" W x 7 1/2" H



7568 Independence Day
5 1/2" W x 6 3/4" H



4856 Birds
4 3/4" W x 5 1/2" H

650-B Iwo Jima
5 5/8" W x 6 1/2" H



6455
Nittany Lion
8 3/4" W x 4 1/2" H

MARC114JB
Eagle On
Marble Base
4 3/4" W x 6" H
(Figure #C114) 3 3/4" H



MAR34JB Baseball Player
On Marble Base
4 3/4" W x 6" H (Figure #11) 4 1/2" H



Over 200 mountable
bookend figures
(See awards on pages 18-21
for more options)

Gifts - Bookends

Genuine metal bookends, made in the USA.



7191
American Eagle
6"W x 9"H



615
American Eagle
5 1/4"W x 8"H



7160
American Eagle w/Shield
5"W x 7"H



7275
American Eagle
5 3/4"W x 6 3/4"H



7067 Irish Setter
5"W x 5 1/4"H



7585 Owl
4 1/2"W x 8 1/4"H



7690 Horse
4 3/4"W x 7 3/4"H



7082 Pegasus
5 3/4"W x 6"H



614 Owl
4 1/2"W x 6 3/4"H



7652 Fox
4"W x 7 1/2"H



7595 Elephant
5"W x 7 1/2"H



7695
Reading Elephant
4 3/4"W x 6 1/2"H



620
Standing Horse
5 1/4"W x 9 1/2"H



7571 Proud Pachyderm
5 1/2"W x 6 3/4"H



7694 Prancing Horse
5 3/4"W x 7 3/4"H



619 Elephant
4"W x 6"H
(Also a bank)



7576 Ram
4 3/4"W x 7 3/4"H



623 Irish Setter
8 3/4"W x 4 1/2"H

Gifts - Paperweights

All items are made in the USA and available in polished brass, polished nickel, satin nickel, satin flemish, pewter and more. Ask about our custom engraving.



7697
Buffalo Nickel
3" Dia. x 7/8" H



7700
Indian Head
Penny
3" Dia. x 7/8" H



7706
Ben Franklin
Half Dollar
3" Dia. x 7/8" H



7707
1884 Silver Dollar
3" Dia. x 7/8" H



9141
Loose Change
5 1/2" L x 4 1/4" W



6817
NASA Space Shuttle
4 3/4" L x 1 3/4" W



7677
Five Dollar Bill
5 1/2" L x 2 1/2" W



C428
\$5000 Gold Bar
3 3/8" L x 1" W



7127
Pediment
4" L x 1 3/4" H



7198
Boot
3 1/2" L x 3 1/4" W



7189
Frog
3" L x 3 3/8" W



7188
Bird
2 1/4" L x 1 1/4" H



7193
Bumblebee
4 1/2" L x 3" W



P9916 Nuts & Bolts
4 1/2" L x 2 3/8" W Imprint Area: 1 1/2" L x 3/8" W



7661 Tennis Racquet
5 3/4" L x 2" W



8022
Heart
2 3/4" W x 2 1/2" W



7657
Super Star
3 3/4" L x 3 3/4" W



7675
Bright Idea
4" L x 2" W



7678
Anvil
4 1/2" L x 1 3/4" H



6830
Anvil
5 1/4" W x 2 1/4" H
Imprint Area: 3" x 1 1/4"
(Shown with optional
engraved logo)

7672
Postage Stamp
3 1/4" L x 3 1/4" W



7656
Boss
3 1/2" L x 2 1/4" W



7765B
Mine
5 1/4" L x 2" W

63



7676
US Mailbox
2 3/8" W x 2 1/2" H



7311
Finger Pointer
4 3/4" L x 2" H

Gifts - Mortars & Pestles

All mortars & pestles are made in the USA and available in polished brass, polished nickel, satin nickel, satin flemish, pewter and more. Ask about our custom engraving.



9251 Eagles & Cherubs Mortar
7 1/4" W x 5" H
9131 Pestle
Pestle: 7 3/4" H



9254 Eagle Head Mortar
8" W x 4 1/2" H
9130 Pestle
Pestle: 7" H



9258 Dragon Mortar
5 1/4" W x 3 1/4" H
9130 Pestle
Pestle: 7" H



9257 Dancing Nymphs Mortar
6" W x 4 1/2" H
9133 Pestle
Pestle: 7 3/4" H



9250 Dragon Handle Mortar
6 1/2" W x 5 1/2" H
9131 Pestle
Pestle: 7 3/4" H



9253 Latin Mortar
4 1/2" W x 4" H
9134 Pestle
Pestle: 6 1/2" H



9256 Germanic Mortar
4 1/2" W x 3 3/4" H
9134 Pestle
Pestle: 6 1/2" H



9255 Lion Head Mortar
5 3/4" W x 3 3/4" H
9131 Pestle
Pestle: 7 3/4" H



9263 Plain Mortar
4 1/2" W x 3 3/4" H
9130 Pestle
Pestle: 7" H



9132 Pestle
6" H



9130 Pestle
7" H



9133 Pestle
7 3/4" H



9131 Pestle
7 3/4" H

Plaques

- Made in the USA
- Many stock figure designs to choose from
- Stock items can be modified to suit your custom needs
- Fully custom designed products available
- Firm quotes
- Pre-production proofs

all our plaques are available fully logoed and engraved or as blank pieces for you to engrave. We also sell blank plaques and components for you to assemble and personalize.

In addition to the stock pieces shown here, we also produce custom designed plaques and figures. All design work and production is done at our factory here in the United States. For custom designs, our designers work from photos, drawings, your idea, a description of what you want, or we can work from your existing design. A basic art layout is prepared for your review. After you and our staff agree on a final design and product specifications, we prepare a final art proof if needed and quote your project. If you decide to go ahead with the project, we will then produce a pre-production proof model for your approval prior to final production.

Your piece can be provided with or without a felt bottom where applicable or mounted on wood, marble, high quality plastic or other special material bases. Various methods of imprinting are available, including molding in the metal, pad printing, attaching etched or silk-screened plates or attaching any of a wide variety of custom or stock medallions.

For custom designs, design and tooling charges can range from hundreds of dollars to thousands. Production time for custom pieces can take anywhere from one to three months.

The following pages contain photos of most of our stock awards and figures. Visit our website to see all of them.



6800 Fireman Plaque
2 3/4" W x 3 1/2" H
Plaque: 12" x 15"
(#6800-PL with Plaque)
Shown in Pewter/Oak



6619 Large Feather Scroll
9" W x 13" H
Plaque: 12" x 15"
(#6619-PL with Plaque)
Shown in Pewter/Cherry



8512 The Bravest
7 1/2" W x 5 1/4" H
Plaque: 10" x 13"
(#8512-PL with Plaque)
Shown in Pewter/Maple

Plaques

All figures are made in the USA and available in polished brass, poished nickel, satin nickel, satin flemish, pewter and more. Wood plaques are available in walnut or cherry finish. Ask about our our custom engraving.



6648 Book Plaque
6 3/4" W x 8 3/4" H Plaque: 9" x 12"



6617 Small Feather Scroll
5 1/2" W x 8" H
Plaque: 8" x 10"



6618 Medium Feather Scroll
7 1/2" W x 10 1/2" H Plaque: 9" x 12"



6619 Large Feather Scroll
9" W x 13" H Plaque: 12" x 15"



6649 Feather Plaque
7 1/4" W x 9 1/4" H Plaque: 9" x 12"



6613 Small Plain Scroll
5 1/4" W x 6 3/4" H Plaque: 8" x 10"



6614 Large Plain Scroll
7" W x 8 3/4" H Plaque: 9" x 12"



7041 Horse Head Plaque
7 1/4" W x 9 1/4" H Plaque: 12" x 15"



9230 Medical Plaque
9 1/4" W x 9" H Plaque: 12" x 15"



**GBA7X9-PL
Gettysburg
Address
Plaque**
7" W x 9" H



**GBA9X12-PL
Gettysburg Address Plaque**
9 1/2" W x 12" H



8506 Fireman Plaque
8 1/2" W x 9 1/4" H Plaque: 12" x 15"



9245 Prescription Plaque
9 1/4" W x 9 1/4" H Plaque: 12" x 15"



6802 Fireman Plaque
6" W x 8" H Plaque: 8" x 10"



6800 Fireman Plaque
2 3/4" W x 3 1/2" H
Plaque: 12" x 15"



7860 Maltese Fireman Plaque
8 1/4" W x 9" H



7044 Goose
11" W x 10 1/2" H



C402 Shield
5" W x 9" H



**7040
Horse Head**
7 1/4" W x
9 1/4" H



6801 Fireman Plaque
4" W x 5 1/2" H
Plaque: 9" x 12"



C118 Knights Shield
5" W x 6 1/2" H



7790 Deer
8 1/2" W x 10 1/2" H



7692 Country Farm
8 3/4" W x 11" H

Plaques

and more. 9"W x 12"H wood plaques are available in walnut or cherry finish. Ask about our our custom engraving.



7878 Super Star
5½"W x 5¼"H Plaque: 9" x 12"
(#7878-PL with Plaque)



9140 Horseshoe
4"W x 4"H Plaque: 9" x 12"
(#9140-PL with Plaque)



9127 Pharmaceutical
3½"W x 5¼"H Plaque: 9" x 12"
(#9127-PL with Plaque)



9128 Pharmaceutical
3"W x 4¾"H Plaque: 9" x 12"
(#9128-PL with Plaque)



7889 Top Banana
2½"W x 5"L Plaque: 9" x 12"
(#7889-PL with Plaque)



7843 Wreath
3"W x 6"L Plaque: 9" x 12"
(#7843-PL with Plaque)



8514 Iwo Jima
4½"W x 5¼"H Plaque: 9" x 12"
(#8514-PL with Plaque)



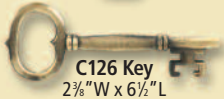
8052 Eagle with 2" Medallion
4½"W x 5¼"H Plaque: 9" x 12"
(#8052-PL with Plaque)



0000 Face Plaque
9½"W x 6½"H



7307 Horse Head
3¾"W x 4¾"H



C126 Key
2¾"W x 6½"L



7306 Horse Head
3¾"W x 4¾"H Plaque: 9" x 12"
(#7306-PL with Plaque)



7869 Eagle
3"W x 7¾"H Plaque: 9" x 12"
(#7869-PL with Plaque)



7868 Eagle
7¼"W x 5"H



7508A Eagle
3¾"W x 4¾"H



7863 Eagle With Arrows
4¾"W x 3¾"H



9126 Pharmaceutical
3¾"W x 4¾"H



7139 Bird
5¼"W x 4¼"H



7100 Swan
5½"W x 4"H



7101 Swan
5½"W x 4"H



C337 Eagle on Scroll
4½"W x 5½"H



C245 Resting Woman
5"W x 2¾"H

All plaques mounts on this page come on 9" x 12" plaques.

Plaques

and more. 10"W x 13"H wood plaques are available in walnut or cherry finish. Ask about our our custom engraving.



7823-7824 Wreaths
3½"W x 6½"L Plaque: 10" x 13"
(#7823-7824-PL with Plaque)



8513 Minute Man
6½" x H x 2½"W Plaque: 10" x 13"
(#8513-PL with Plaque)



9125 Pharmacy
5¼"W x 7¼"L Plaque: 10" x 13"
(#9125-PL with Plaque)



8510 Medical
6"L x 5"H Plaque: 10" x 13"
(#8510-PL with Plaque)



8512 The Bravest
7½"W x 5¼"H Plaque: 10" x 13"
(#8512-PL with Plaque)



C314 Horse Head
6"W x 6½"L Plaque: 10" x 13"
(#C314-PL with Plaque)



8509 Police
6"W x 6½"L Plaque: 10" x 13"
(#8509-PL with Plaque)



8508 Fireman
6"W x 7½"L Plaque: 10" x 13"
(#8508-PL with Plaque)



7882 Eagle
4"W x 9½"L Plaque: 10" x 13"
(#7882-PL with Plaque)



8809 Eagle on Wreath
9½"W x 5¼"H Plaque: 10" x 13"
(#8809-PL with Plaque)



7829 Victory
6" Dia. Plaque: 10" x 13"
(#7829-PL with Plaque)



7847 Golf
6" Dia. Plaque: 10" x 13"
(#7847-PL with Plaque)



7037 Eagle
5"W x 9½"L



7868 Eagle
7¼"W x 5"L



8805 Eagle
9½"W x 7"H



7045 Goose
8¼"L x 8"H



7377 Eagle With Shield
5½"W x 6¼"L



9602 Navy
7"W x 6¼"L



7872 Eagle With Shield
5½"W x 6¼"L



7834 Female Basketball
6" Dia.



7849 Soccer
6" Dia.



7820 Female Bowling
6" Dia.



7819 Baseball
6" Dia.



7837 Male Bowling
6" Dia.



7821 Female Softball
6" Dia.



7822 BMX Racing
6" Dia.



7846 Track & Field
6" Dia.



750 Lady Liberty
7¼"W x 8"L



7848 Wrestling
6" Dia.



8511 Dog
5¼"W x 6½"L



C294 Medical
2¼"W x 7"L

Plaques

All figures are made in the USA and available in polished brass, poished nickel, satin nickel, satin flemish, pewter and more. 8"W x 10"H wood plaques are available in walnut or cherry finish. Ask about our our custom engraving.



7788 Shell
3½"W x 2¼"H Plaque: 8" x 10"
(#7789-PL with Plaque)



A0001 Music
3½"L x 2"W Plaque: 8" x 10"
(#A0001-PL with Plaque)



751 Lady Liberty
3¼"W x 3¼"H Plaque: 8" x 10"
(#751-PL with Plaque)



C192 Mustang
4¼"L x 3¾"H Plaque: 8" x 10"
(#C192-PL with Plaque)



9289 Disk Holder
3¾"Dia. Plaque: 8" x 10"
(#9289-PL with Plaque)



C277 Steer Head
4¼"W x 4¼"H Plaque: 8" x 10"
(#C277-PL with Plaque)



9305 Eagle Head
3½"W x 2¼"H Plaque: 8" x 10"
(#9305-PL with Plaque)



8507 Fireman Head
2¼"L x 1¼"H Plaque: 8" x 10"
(#8507-PL with Plaque)



8018 Hockey
4½"W x 3¾"H Plaque: 8" x 10"
(#8018-PL with Plaque)



7828 Football
3"Dia. Plaque: 8" x 10"
(#7828-PL with Plaque)



7826 Wrestling
3"Dia. Plaque: 8" x 10"
(#7826-PL with Plaque)



7862 Eagle
5"W x 3¾"H Plaque: 8" x 10"
(#7862-PL with Plaque)



8054 Crown
2½"W x 3¼"L

7842 Genie Lamp
3½"W x 3¾"L

7825 Basketball
3" Dia.

7832 Female Basketball
3" Dia.

7830 Soccer
3" Dia.

7831 Female Soccer
3" Dia.

7137 Bird
2¼"W x 3"L

7865 Eagle
1½"W x 3¾"L

7053 Lion Head
3¾"W x 3"L

P9504 Lincoln Disk
3¼"Dia.

7836 Female Bowling
3" Dia.

7835 Bowling
3" Dia.

7827 Tennis
3" Dia.

7833 Hockey
3" Dia.

7138 Bird
4¼"L x 3¼"H

7861 Eagle
6"L x 2¼"H

7866 Eagle
3"L x 2"H

M4 Medical
1"W x 3¾"H

8032 Olympic Torch
2¼"Dia.

8051 Baseball
3" Dia.

7838 Baseball
3" Dia.

7839 Softball
3" Dia.

8050 Track & Field
3" Dia.

7424 Swan
4¼"L x 3¾"H

7425 Swan
4¼"L x 3¾"H

8030 Indian Brave
2¼"W x 3¾"H

Plaques

All figures are made in the USA and available in polished brass, poished nickel, satin nickel, satin flemish, pewter and more. Ask about our our custom engraving.



7020 Eagle
18 3/4" W x 5 1/2" H



8565 Eagle
28" W x 9 1/4" H



8562 Eagle
19" W x 5 1/4" H



7351 Eagle
10" W x 10" H



7028 Eagle
24" W x 9 1/4" H



7539 Eagle
18" W x 5 1/4" H



7364 Eagle
17" W x 7" H



7422 Eagle With Shield
25 1/4" W x 8" H



7416 Eagle
19" W x 10" H



7421 Eagle
9 1/4" W x 9 1/4" H



7032 Eagle
28" W x 10 1/2" H



7867 Eagle
11 1/4" W x 8" H



7441 Eagle
12 1/2" W x 12 1/2" H



7388 Eagle With Shield
20 1/4" W x 6 1/4" H



7870 Eagle
9 1/2" W x 4 1/2" H



8804 Eagle
9 1/2" W x 3 1/2" H



7115 Horse
15 1/4" W x 10 1/4" H



7149 Eagle
4" W x 6 1/4" H




7203 Two Eagles
13 1/2" W x 4 1/2" H



7116 Horse
13 1/4" W x 10" H

Flag Pole Ornaments

- Made in the USA
- Molded metal
- Stock items can be modified to suit your custom needs
 - Fully custom designed products available
 - Firm quotes
- Pre-production proofs

 Our stock designs are all pictured below. We can also produce custom flagpole ornaments. All design work and production is done at our factory here in the United States. For custom designs, our designers work from photos, drawings, your idea, a description of what you want, or we can work from your existing design. A basic art layout is prepared for your review. After you and our staff agree on a final design and product specifications, we prepare a final art proof if needed and quote your project. If you decide to go ahead with the project, we will then produce a pre-production proof model for your approval prior to final production.

For custom designs, design and tooling charges can range from hundreds of dollars to thousands. Production time for custom pieces can take anywhere from one to three months.

7602 Eagle
5½"W x 5"H
Bottom Dia: 1¼"



7519 Eagle
4"W x 4"H
Bottom Dia: 1¼"



6579 Eagle
11¾"W x 9"H
Bottom Dia: 1"



542 Army Spear
3½"W x 8"H
Bottom Dia: 1"



6544 Church Cross
5"W x 8"H
Bottom Dia: 1"



6541 Round Spear
1½"W x 7¾"H
Bottom Dia: 1¼"

Flag Pole Ornaments

All flag pole ornaments are made in the USA
and available in polished brass, polished nickel, satin nickel, satin flemish, pewter and more.



7578 Eagle
8"W x 6½"H
Bottom Dia: 1"



7601 Eagle with Screw
4½"W x 3¾"H



7520 Eagle
6"W x 5¼"H Bottom Dia: 1¼"



C326 Eagle
5¾"W x 7"H
Bottom Dia: 1"



C374 Eagle
4"W x 4¾"H
Bottom Dia: ¾"



7518 Eagle
7"W x 5¾"H Bottom Dia: 1½"



6543 Eagle
7"W x 6¾"H
Bottom Dia: 1"



6449 Eagle
9¼"W x 7¼"H
Bottom Dia: 1"



7583 Eagle
6¼"W x 5"H
Bottom Dia: 7"



6450 Parade Ball
3"W x 4"H
Bottom Dia: 1"



7589 Star of David
5"W x 6¾"H
Bottom Dia: 1"



6421 Cross
4¼"W x 9"H
Bottom Dia: 1"



6580 Avalon Cross
5½"W x 6¾"H
Bottom Dia: 1"



6581 Avalon Cross
4¾"W x 5¾"H
Bottom Dia: 1"



7599 Cross
4¾"W x 7¾"H
Bottom Dia: 1"



7581 Cross
5"W x 7¾"H
Bottom Dia: 1¼"



7713 Spear
2"W x 6"H
Bottom Dia: 1"



6416 Spear
1½"W x 7"H
Bottom Dia: ¾"



6540 Flat Spear
1½"W x 7"H
Bottom Dia: 1"



6420 Round Spear
1¾"W x 7¾"H
Bottom Dia: 1"

Finishes, Bases, Tooling & Proofing

Finishes

Our products are made of a base metal and then plated or colored in the following choices of finishes:



Polished Brass



Satin Flemish



Polished Nickel



Pewter



Satin Nickel



Copper

Other finishes available upon request

Bases

Most of our products can be mounted on wood, marble, high quality plastic or other special material bases. Various methods of imprinting are available for the bases, including pad printing, attaching etched or silk-screened plates or attaching any of a wide variety of custom or stock medallions. Many of them are shown throughout the catalog. Please contact us for details and pictures of the various bases we offer.

Tooling

There are no tooling charges for our stock items. For custom designs, tooling charges can range from hundreds to thousands of dollars. Tooling costs are quoted for each specific project. There are no tooling charges on exact repeat orders.

Proofing

We provide paper proofs upon request and strongly suggest they be requested for any items involving imprint. Custom designed products require design drawings that have to be approved. After a final design is approved, a pre-production model is prepared for further approval prior to the actual production run. All corrections or additions to proofs must be in writing. Design and proofing charges will be quoted for each specific project.

General Information

Artwork

We prefer to receive electronic art in Illustrator, CorelDraw or Photoshop. EPS, PDF, TIFF and JPEG files are also acceptable if 600 DPI quality or higher. Artwork must be camera ready. If it isn't, additional costs will be charged to clean up your art. You will be notified of the costs. In addition to submitting the electronic art file, a faxed hard copy of the art must be sent with your purchase order.

If you don't have art or a design, we can develop it for you at a reasonable cost that we will quote before beginning work. For custom designs, our designers work from photos, drawings, your idea, a description of what you want, or we can work from your existing design. A basic art layout is prepared for your review. After you and our staff agree on a final design and product specifications, we prepare a final art proof if needed and quote your project. If you decide to go ahead with the project, we will then produce a pre-production proof model for your approval prior to final production.

Trademarks/Logos

We assume clients are authorized to use the trademarks and logos they submit to us for reproduction. We assume no legal liability in any trademark or logo disputes.

Ordering

All orders must be submitted in writing. If imprinting is involved and you are providing the art/copy, a hard copy of the imprint must be submitted with your purchase order.

Production Time

Normal production time is 3 to 4 weeks from final art approval or from date of submission of unimprinted orders. Custom designed products can require up to 8 weeks production time.

Shipping

Products are shipped F.O.B. our factory in New Jersey. Unless a shipping method is designated, we ship best method by ground. Drop shipments to multiple locations are available for a slight additional charge plus the actual freight cost. We also ship COD for a small additional charge. Export shipping is also available at a small additional charge plus the actual freight cost.

Less Than Minimum Orders

Orders for less than stated minimums are available in some cases. Contact us for specific requests.

Rush Orders

Contact us for your rush order needs. We will do our best to accommodate your schedule.

Over-Runs/Under-Runs

Orders are subject to a 5% over-run or under-run. You will be billed for the exact quantity shipped.

PMS Color Match

We will match as close as possible at no extra charge.

Personalization

Many of our products can be personalized with individual names or event or team names. Contact us for further information and costs.

Errors/Returns

If you have a problem with any of our products please contact us to discuss it. We guarantee our work 100%. If there is a problem and we are at fault we will replace or reimburse you for any defective products. No merchandise may be returned without our written authorization. All claims must be submitted in writing within 15 days of receipt of order. Claims for lost or damaged goods must be made by the client with the shipper, as responsibility transfers to the shipper upon pick-up of goods from our factory.

Billing

If you have not established credit with us, orders may require a deposit and COD payment for the balance due.

